

# Circulation: Pedestrian, Bike & Vehicular



**Legend**  
 Bay Circuit Trail  
 Charles River Link Trail  
 Other Local Links to Trails

## 1 Trails

Medfield State Hospital is at the confluence of the Charles River Link Trail and the Bay Circuit Trail. Local links cross the site could be augmented to support public access and to draw people for potential destination uses on the site.

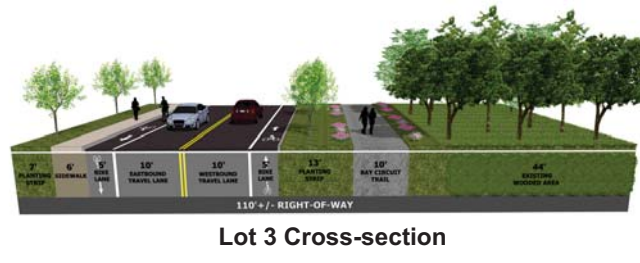


## 2 Autonomous Vehicles

Self-driving vehicles will soon be commonplace. Olli, as shown above, is a self-driven, electric shuttle, ideal for campus and downtown settings. 3D-printed by Local Motors, Olli could move people around the MSH campus, and between locations in Medfield.



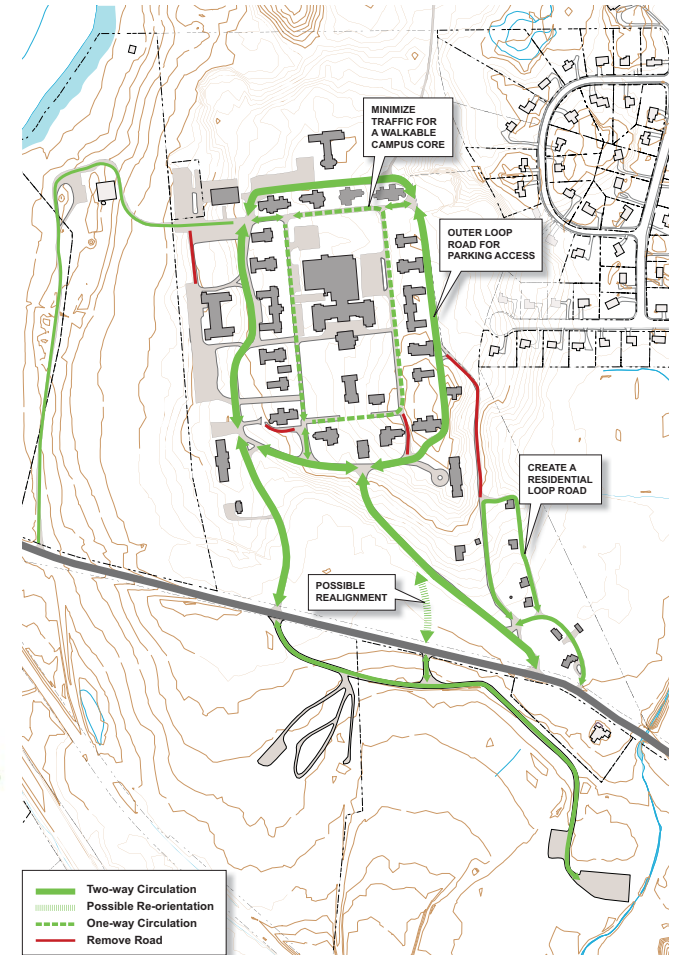
Walking paths and bicycling are preferred amenities in redevelopment, including senior active living options.



Lot 3 Cross-section

## 3 Bike & Pedestrian Paths

Bike and pedestrian paths should be included on the site to promote walkability for a range of age groups including dedicated lanes on the core campus, and paths and trails connecting the hospital area with surrounding open space and recreation areas, as well as downtown Medfield.



## 4 Vehicular Circulation

Clear vehicular circulation and well-designed wayfinding around the campus will promote multi-modal access. Primary vehicular access should focus on the perimeter road connecting parking areas. This will help promote a walkable environment in the core campus loop by reducing vehicular trips.

