

MSBA Enrollment Projection – Medfield

Historic Enrollment Data (DESE)

YEAR	PK	K	1	2	3	4	5	6	7	8	9	10	11	12	K-12
1993-94	46	193	229	195	176	185	166	168	135	128	135	136	111	107	2,064
1994-95	40	240	204	234	194	169	182	168	164	141	121	136	134	115	2,320
1995-96	43	213	248	207	239	198	173	183	163	163	123	117	134	135	2,296
1996-97	43	221	233	255	207	249	203	182	175	165	143	120	116	133	2,402
1997-98	42	203	235	243	263	211	256	206	172	175	149	153	119	113	2,498
1998-99	37	242	220	245	244	267	213	261	203	167	175	144	147	120	2,648
1999-00	39	211	253	226	245	255	264	209	255	195	157	176	143	150	2,739
2000-01	43	236	232	257	228	248	258	265	205	249	190	156	178	142	2,844
2001-02	63	245	246	238	251	232	249	259	262	201	223	186	152	173	2,917
2002-03	39	206	262	247	244	251	231	246	249	256	187	219	187	154	2,939
2003-04	44	239	213	257	251	244	250	236	241	244	241	186	221	180	3,003
2004-05	52	233	247	222	257	257	245	249	232	238	225	241	181	220	3,047
2005-06	54	202	242	240	221	259	260	244	247	228	226	217	244	179	3,009
2006-07	49	203	220	238	248	220	263	254	237	247	213	223	213	243	3,022
2007-08	49	201	209	221	245	254	224	261	244	239	240	213	230	208	2,989
2008-09	50	173	202	216	222	248	259	226	260	248	229	235	215	221	2,954
2009-10	50	204	190	208	224	234	250	262	221	256	243	231	235	212	2,970
2010-11	52	163	203	194	214	222	232	248	256	218	240	235	226	236	2,887
2011-12	50	173	179	201	199	214	225	233	239	249	201	233	237	227	2,810
2012-13	49	146	183	186	205	199	222	225	233	237	237	195	231	240	2,739
2013-14	48	157	158	177	189	206	197	216	216	228	222	231	197	232	2,626
2014-15	59	148	170	163	186	197	208	202	216	213	226	220	231	199	2,579
2015-16	57	168	162	171	170	187	202	208	200	212	198	219	218	231	2,546
2016-17	60	176	183	174	174	178	191	215	207	204	207	196	220	218	2,543
2017-18	69	174	193	195	183	183	182	195	218	209	199	209	191	229	2,560

K-1	2-3	4-5	6-8	9-12
422	371	351	431	489
444	428	351	473	506
461	446	371	509	509
454	462	452	522	512
438	506	467	553	534
462	489	480	631	586
464	471	519	659	626
468	485	506	719	666
491	489	481	722	734
468	491	482	751	747
452	508	494	721	828
480	479	502	719	867
444	461	519	719	866
423	486	483	738	892
410	466	478	744	891
375	438	507	734	900
394	432	484	739	921
366	408	454	722	937
352	400	439	721	898
329	391	421	695	903
315	366	403	660	882
318	349	405	631	876
330	341	389	620	866
359	348	369	626	841
367	378	365	622	828

MSBA Enrollment Projection – Medfield

Historic Birth Data (MA Department of Public Health)

Maternal Age	1989	1990	1991	1992	1993	1994	1995	1996	1997	1998	1999	2000	2001	2002	2003	2004	2005	2006	2007	2008	2009	2010	2011	2012	2013	2014	2015	2016
10-14 Yrs	0	0	0	0	0	0	0	0	0	0	0	0	0	0	0	0	0	0	0	0	0	0	0	0	0	0	0	0
15-19 Yrs	0	0	0	0	0	0	0	0	0	0	0	0	0	0	0	0	0	0	0	0	0	0	0	0	0	0	0	0
20-24 Yrs	7	0	6	0	0	0	0	0	0	0	0	0	0	5	0	0	0	7	0	6	0	0	0	0	0	0	0	0
25-29 Yrs	44	43	34	30	31	32	28	21	24	16	13	19	14	11	13	13	10	9	8	13	6	5	12	7	7	9	8	0
30-34 Yrs	75	67	73	70	76	75	79	86	91	67	67	57	71	62	65	51	55	50	40	31	32	43	36	39	50	44	57	56
35-39 Yrs	28	39	37	48	49	42	49	67	54	61	64	63	55	50	36	47	45	38	41	35	29	44	20	36	33	38	43	44
40-44 Yrs	0	0	6	0	8	12	10	13	12	6	16	9	14	6	12	12	9	10	10	9	0	10	11	0	0	0	7	0
Total Births	159	157	156	156	169	165	169	189	182	154	162	151	155	136	129	124	120	116	100	96	72	104	80	88	98	100	115	120

Female Population Data

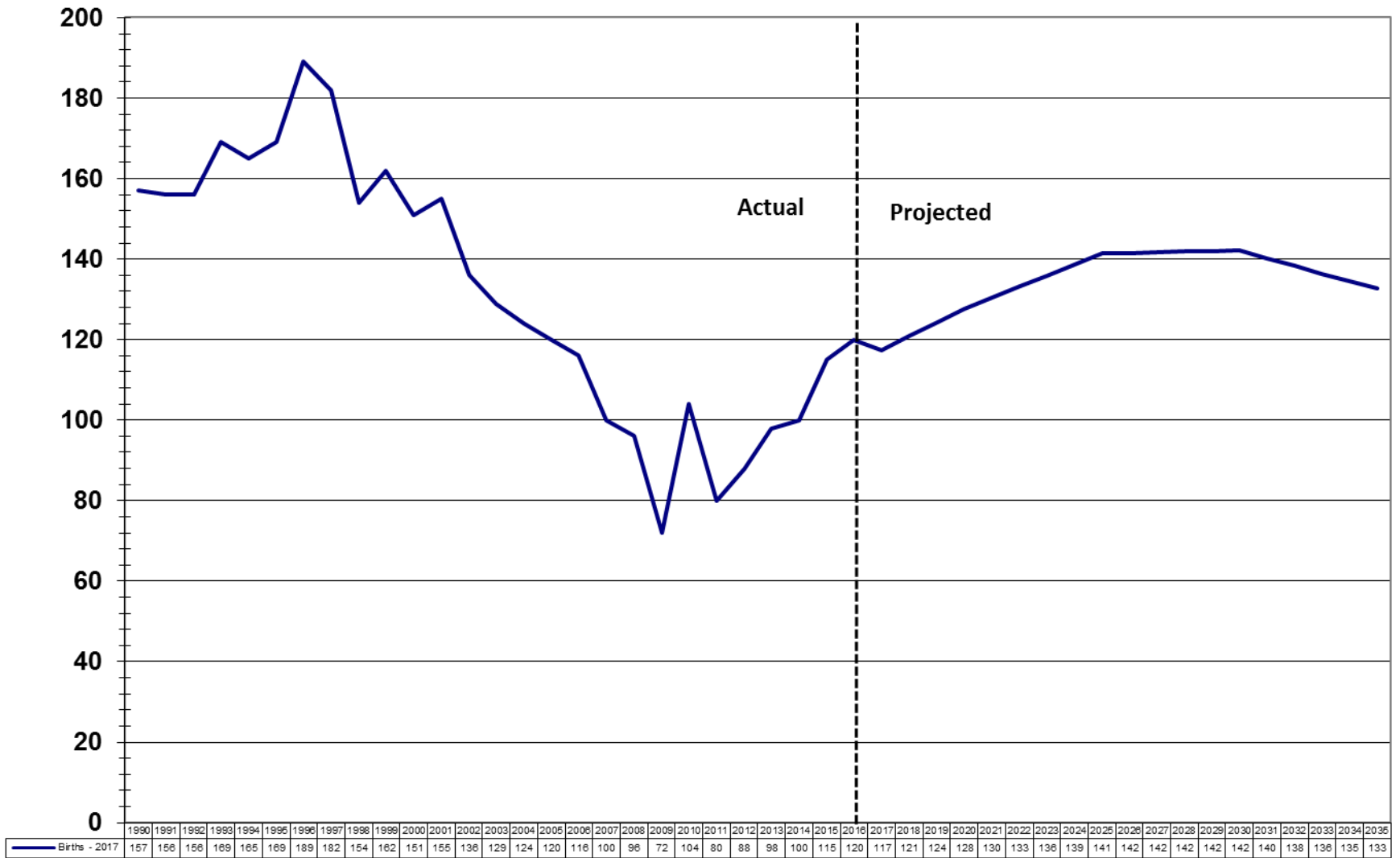
Maternal Age	US Census Data			U Mass Donohue Institute					2014-2016 Avg Fertility Rate
	1990	2000	2010	2015	2020	2025	2030	2035	
10-14 Yrs	331	576	660	607	427	297	356	384	0.00%
15-19 Yrs	313	376	531	518	461	325	231	273	0.00%
20-24 Yrs	307	123	183	214	197	177	124	92	0.00%
25-29 Yrs	326	144	129	173	166	162	146	104	3.55%
30-34 Yrs	465	343	180	222	265	274	267	242	25.82%
35-39 Yrs	516	622	327	277	318	387	404	393	16.20%
40-44 Yrs	525	712	504	383	311	358	436	458	0.61%
Total Females	5,257	6,242	6,196	6,092	5,773	5,578	5,516	5,489	1.84%

Birth Projections

Maternal Age	2017	2018	2019	2020	2021	2022	2023	2024	2025	2026	2027	2028	2029	2030	2031	2032	2033	2034	2035
10-14 Yrs	0	0	0	0	0	0	0	0	0	0	0	0	0	0	0	0	0	0	0
15-19 Yrs	0	0	0	0	0	0	0	0	0	0	0	0	0	0	0	0	0	0	0
20-24 Yrs	0	0	0	0	0	0	0	0	0	0	0	0	0	0	0	0	0	0	0
25-29 Yrs	6	6	6	6	6	6	6	6	6	6	6	5	5	5	5	5	4	4	4
30-34 Yrs	62	64	66	68	69	69	70	70	71	70	70	70	69	69	68	66	65	64	62
35-39 Yrs	48	49	50	52	54	56	58	60	63	63	64	64	65	65	65	65	64	64	64
40-44 Yrs	2	2	2	2	2	2	2	2	2	2	2	2	3	3	3	3	3	3	3
Totals	117	121	124	128	130	133	136	139	141	142	142	142	142	142	140	138	136	135	133

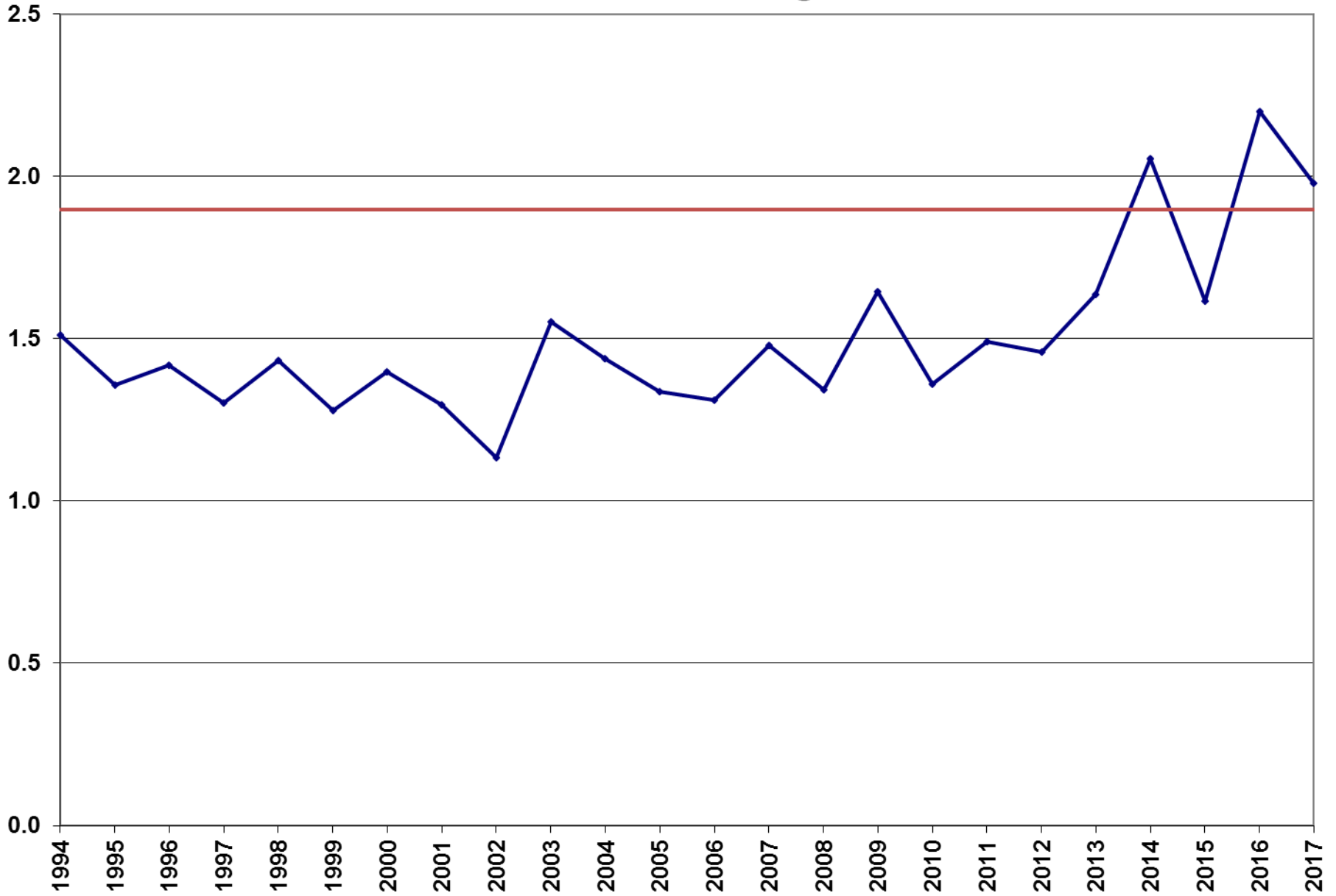
MSBA Enrollment Projection – Medfield

Medfield Births



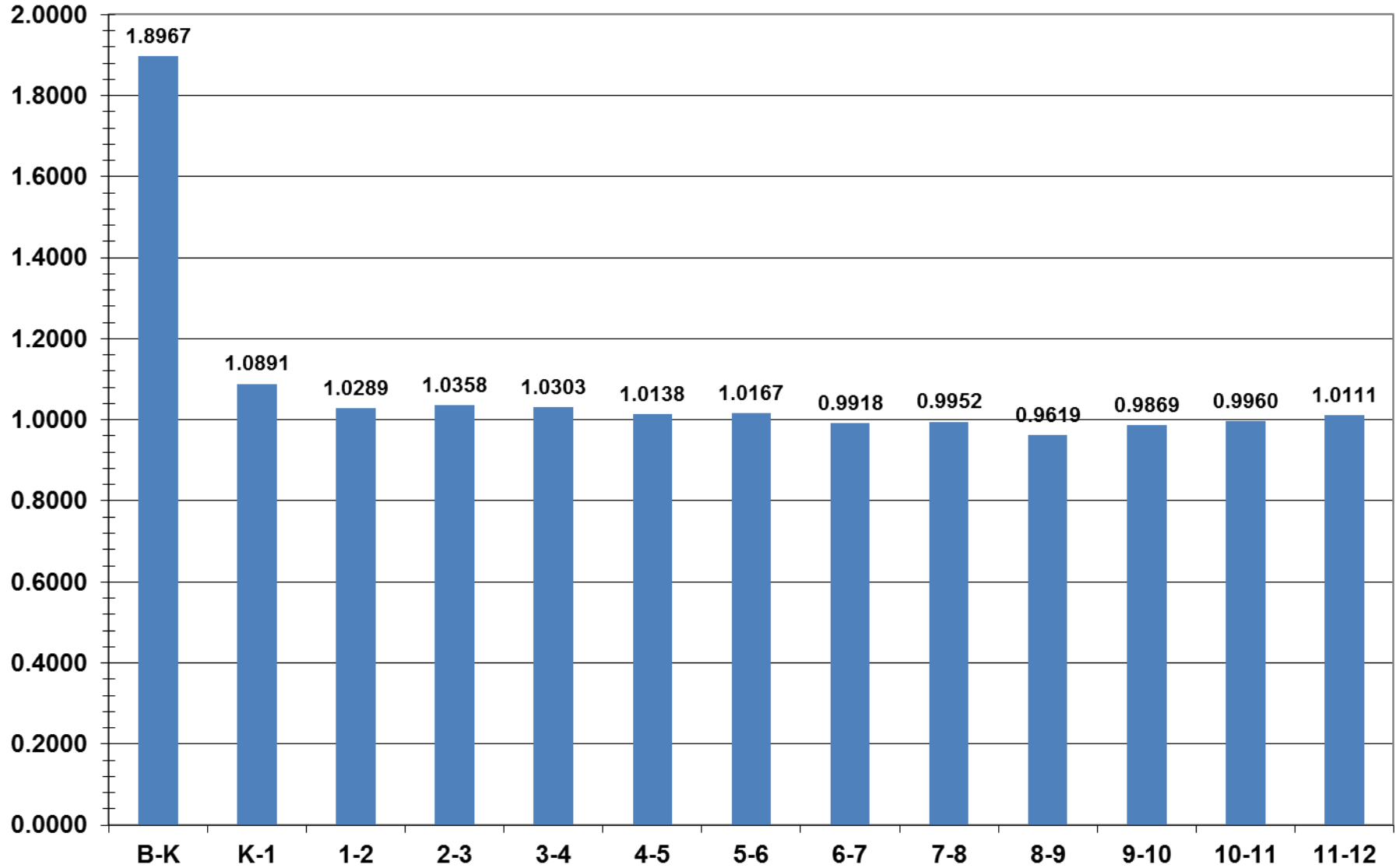
MSBA Enrollment Projection – Medfield

Medfield Birth to Kindergarten Ratio



MSBA Enrollment Projection – Medfield

Medfield Grade-to-Grade Ratios - 5 Yr Average



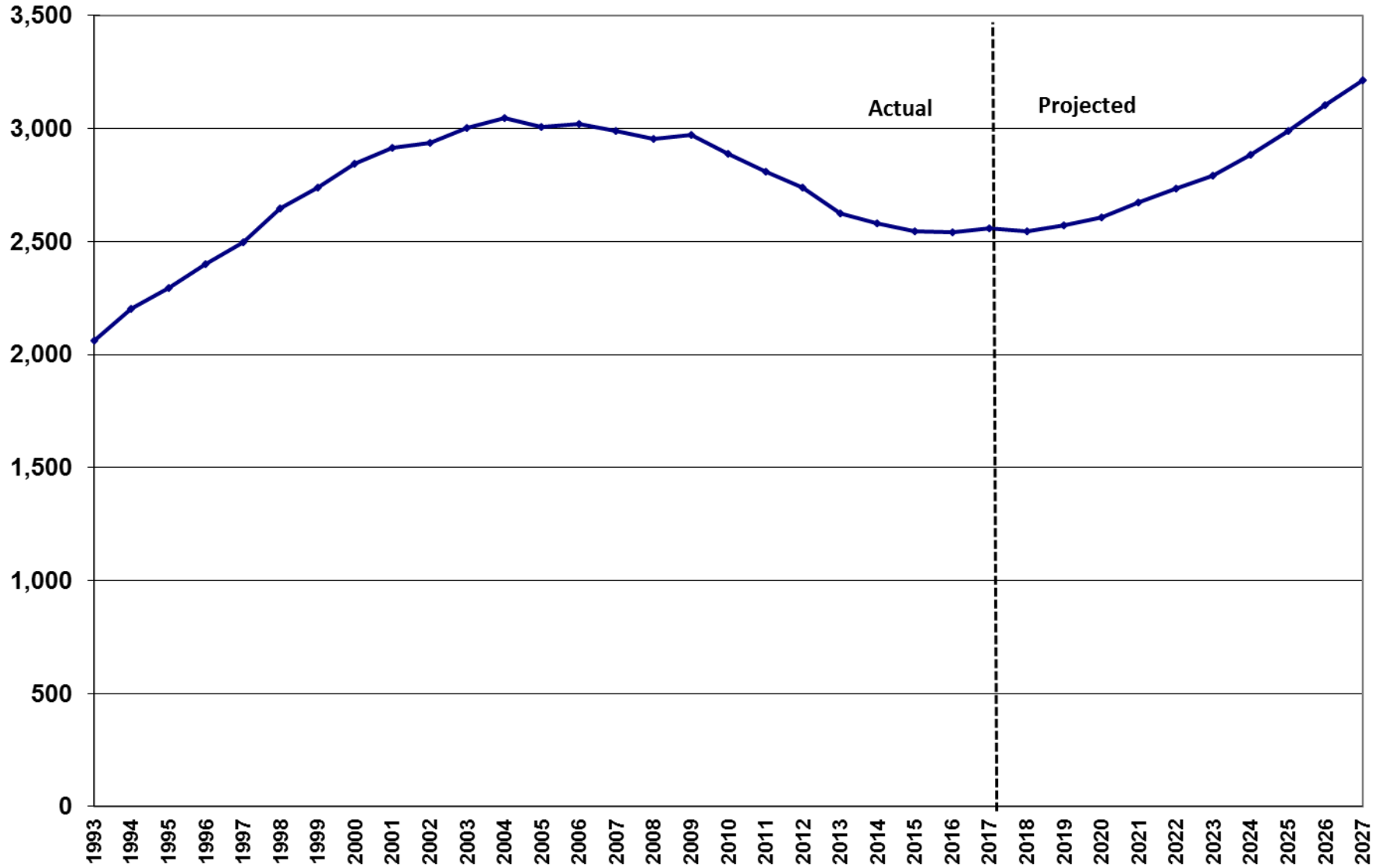
MSBA Enrollment Projection – Medfield

Base Enrollment Projections

YEAR	K	1	2	3	4	5	6	7	8	9	10	11	12	TOTAL	K-1	2-3	4-5	6-8	9-12
1993	193	229	195	176	185	166	168	135	128	135	136	111	107	2,064	422	371	351	431	489
1994	240	204	234	194	169	182	168	164	141	121	136	134	115	2,202	444	428	351	473	506
1995	213	248	207	239	198	173	183	163	163	123	117	134	135	2,296	461	446	371	509	509
1996	221	233	255	207	249	203	182	175	165	143	120	116	133	2,402	454	462	452	522	512
1997	203	235	243	263	211	256	206	172	175	149	153	119	113	2,498	438	506	467	553	534
1998	242	220	245	244	267	213	261	203	167	175	144	147	120	2,648	462	489	480	631	586
1999	211	253	226	245	255	264	209	255	195	157	176	143	150	2,739	464	471	519	659	626
2000	236	232	257	228	248	258	265	205	249	190	156	178	142	2,844	468	485	506	719	666
2001	245	246	238	251	232	249	259	262	201	223	186	152	173	2,917	491	489	481	722	734
2002	206	262	247	244	251	231	246	249	256	187	219	187	154	2,939	468	491	482	751	747
2003	239	213	257	251	244	250	236	241	244	241	186	221	180	3,003	452	508	494	721	828
2004	233	247	222	257	257	245	249	232	238	225	241	181	220	3,047	480	479	502	719	867
2005	202	242	240	221	259	260	244	247	228	226	217	244	179	3,009	444	461	519	719	866
2006	203	220	238	248	220	263	254	237	247	213	223	213	243	3,022	423	486	483	738	892
2007	201	209	221	245	254	224	261	244	239	240	213	230	208	2,989	410	466	478	744	891
2008	173	202	216	222	248	259	226	260	248	229	235	215	221	2,954	375	438	507	734	900
2009	204	190	208	224	234	250	262	221	256	243	231	235	212	2,970	394	432	484	739	921
2010	163	203	194	214	222	232	248	256	218	240	235	226	236	2,887	366	408	454	722	937
2011	173	179	201	199	214	225	233	239	249	201	233	237	227	2,810	352	400	439	721	898
2012	146	183	186	205	199	222	225	233	237	237	195	231	240	2,739	329	391	421	695	903
2013	157	158	177	189	206	197	216	216	228	222	231	197	232	2,626	315	366	403	660	882
2014	148	170	163	186	197	208	202	216	213	226	220	231	199	2,579	318	349	405	631	876
2015	168	162	171	170	187	202	208	200	212	198	219	218	231	2,546	330	341	389	620	866
2016	176	183	174	174	178	191	215	207	204	207	196	220	218	2,543	359	348	369	626	841
2017	174	193	195	183	183	182	195	218	209	199	209	191	229	2,560	367	378	365	622	828
2018	186	190	199	202	189	186	185	193	217	201	196	208	193	2,544	375	401	374	595	799
2019	190	202	195	206	208	191	189	184	192	209	198	196	210	2,570	392	401	399	565	813
2020	218	207	208	202	212	211	194	187	183	185	206	198	198	2,608	425	410	423	564	786
2021	228	238	213	216	208	215	215	193	186	176	183	205	200	2,673	465	428	423	593	763
2022	223	248	244	220	222	211	218	213	192	179	173	182	207	2,733	471	465	433	623	742
2023	229	243	255	253	227	225	214	217	212	185	177	173	184	2,793	472	508	452	643	718
2024	236	250	250	264	261	230	229	213	216	204	182	176	175	2,884	485	514	491	657	736
2025	242	257	257	259	272	264	234	227	212	207	201	181	178	2,992	499	516	537	673	768
2026	247	264	264	266	266	276	269	232	226	204	205	200	183	3,103	511	530	542	727	792
2027	253	269	271	274	274	270	281	267	231	218	201	204	202	3,214	522	545	544	778	825
10 yr avg	0	0	0	0	0	0	0	0	0	0	0	0	0	0	351	385	424	677	885
5 yr avg	0	0	0	0	0	0	0	0	0	0	0	0	0	0	336	362	392	642	866
2 yr avg	0	0	0	0	0	0	0	0	0	0	0	0	0	0	363	363	367	624	835
5 yr proj	168	182	189	197	207	217	223	227	227	220	220	220	225	2,721	426	421	410	588	781
10 yr proj	165	173	176	180	190	196	207	211	213	210	215	211	222	2,571	462	472	462	642	774

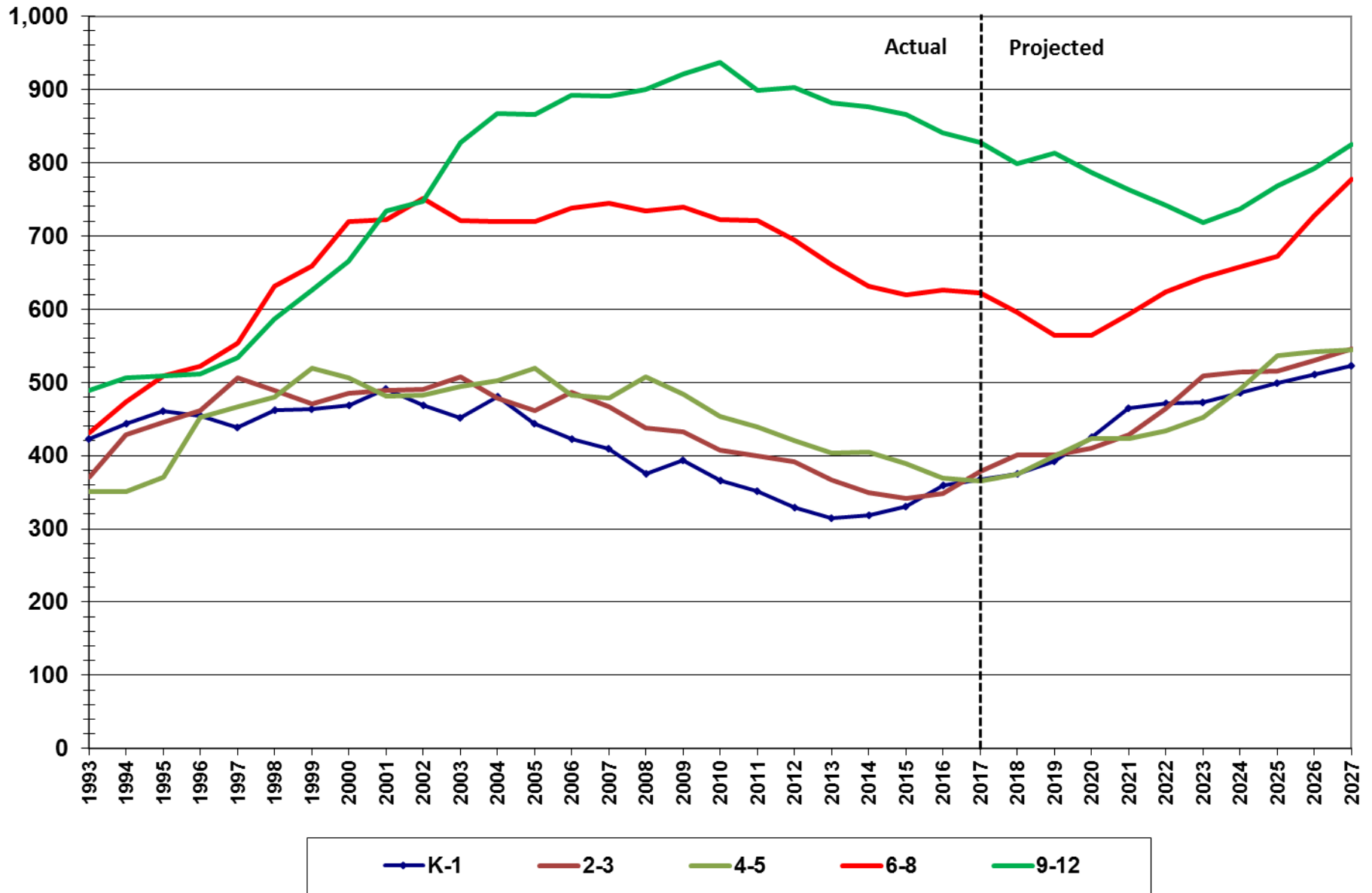
MSBA Enrollment Projection – Medfield

Medfield Total Enrollment



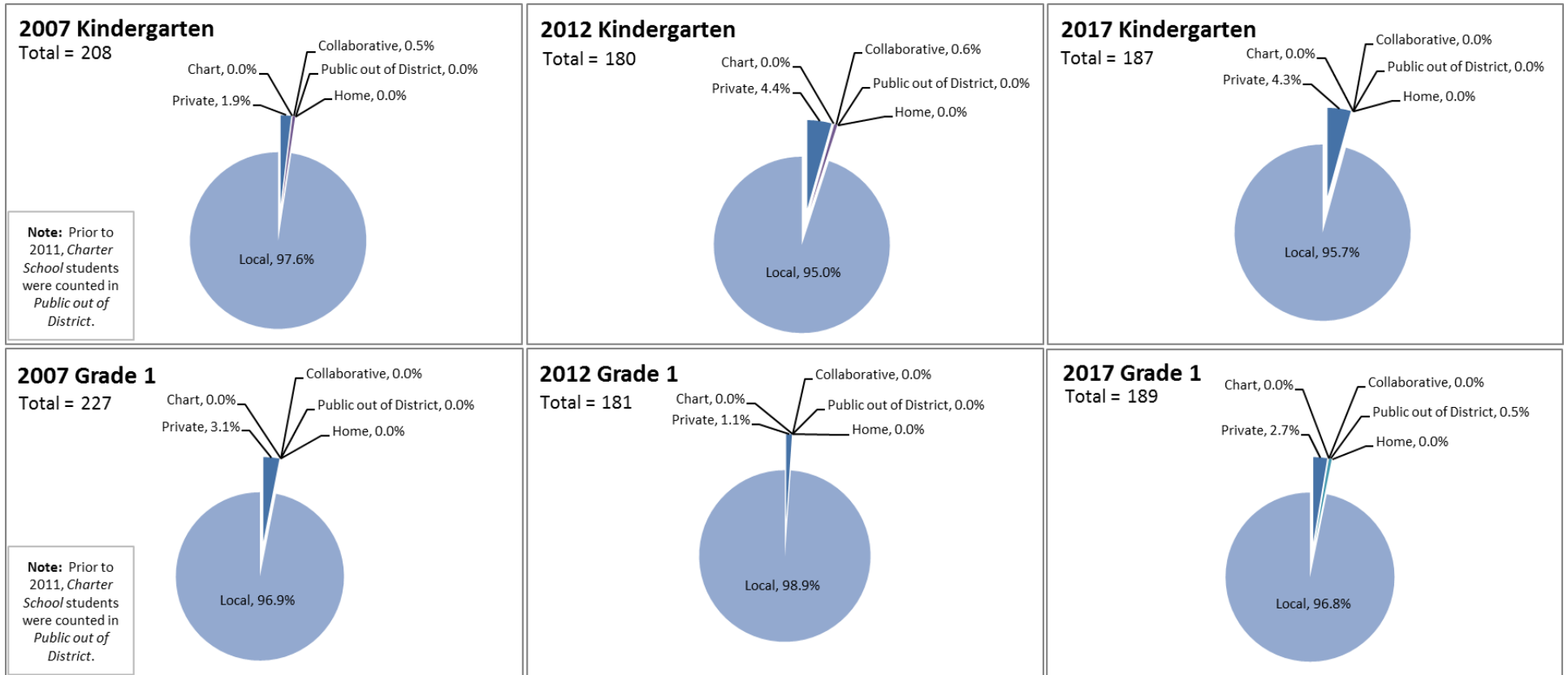
MSBA Enrollment Projection – Medfield

Medfield Enrollment by Grade Group



MSBA Enrollment Projection – Medfield

The following charts show the School Attending Children Profiles (indicating where all school-aged children that reside in the district attend school) at the typical transition grades for elementary school, middle school, and high school.

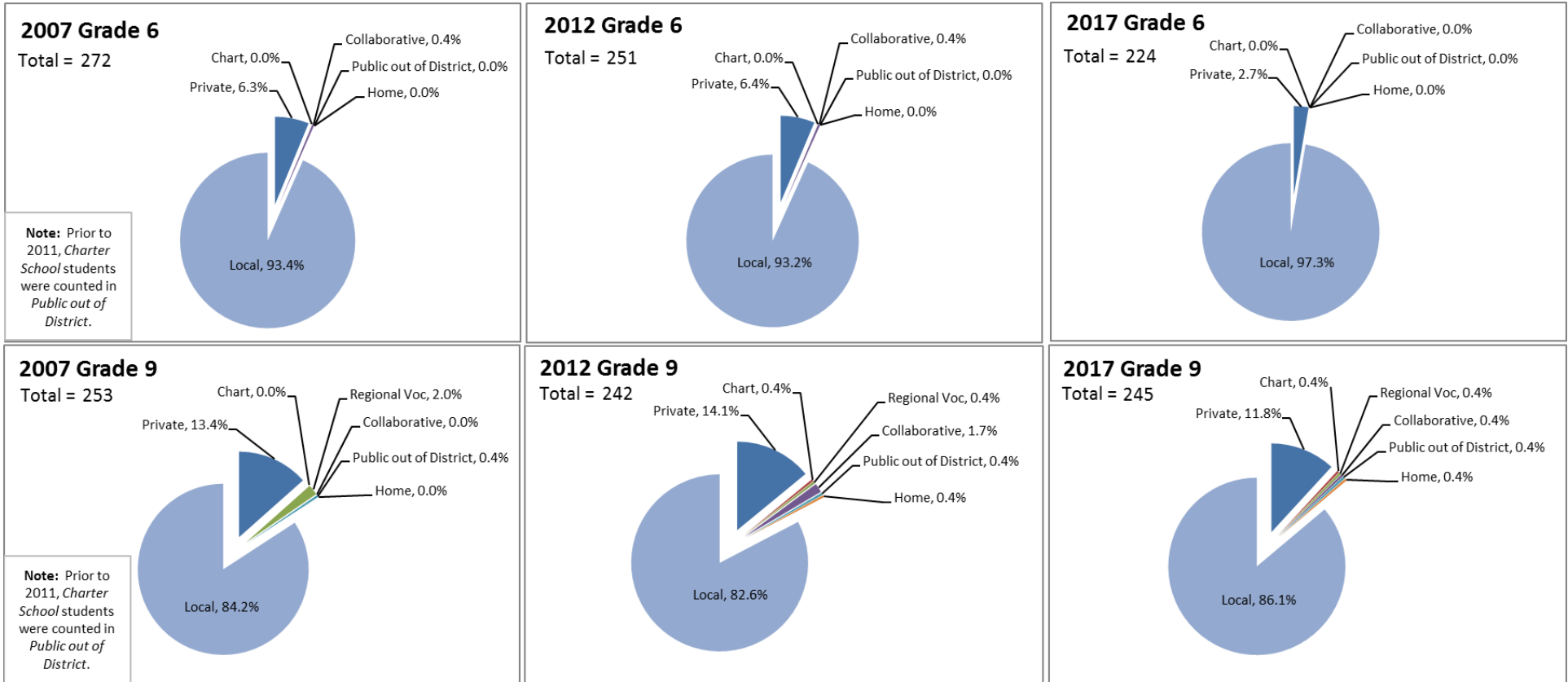


School Attending Children Profiles

Grades K and 1

These profiles show the enrollment of all full-time students whose parents or legal guardians are residents of the city or town.

MSBA Enrollment Projection – Medfield



School Attending Children Profiles

Grades 6 and 9

These profiles show the enrollment of all full-time students whose parents or legal guardians are residents of the city or town.