



School Building Committee
Meeting Packet
February 12, 2024



FutureThink

PLAN TO EMPOWER

PROPOSAL



Medfield Public Schools
Enrollment Projection Study
January 24, 2024

Medfield Public Schools, MA

OVERVIEW

FutureThink will provide 10-year enrollment projections (by grade, by school) for the Medfield Public Schools including an overview of the school district, current and future housing development, population trends, birth counts, migration patterns, and environmental factors.

Submitted to:

Michael La Francesca, Assistant Director for Finance & Operations
Medfield Public Schools
459 Main Street, 3rd Floor
Medfield, MA 02481
508-906-3035
mllafrancesca@email.medfield.net

Submitted by:

Tracy Healy, Owner/President
FutureThink, LLC
5685 Tynecastle Loop
Dublin, OH 43016
614-264-2638
thealy@futurethinkinc.com



Medfield Public Schools, MA

STATEMENT OF QUALIFICATIONS

Overview

FutureThink, a woman-owned business (WBE-certified), has been in operation since May 2006. Tracy Healy is the Owner and President.

Our mission is to empower the people and communities with whom we work—enhancing the educational experience through planning.

Services

FutureThink focuses primarily on enrollment projections and demographic studies while continuing to offer a wide range of planning services, including:

- ▶ Facility Master Planning
- ▶ Capacity Analysis
- ▶ Educational Specifications
- ▶ Redistricting
- ▶ Strategic Planning
- ▶ Use of Geographic Information Systems in Planning

It is our goal to provide high quality service—ensuring that our clients have the tools necessary to make informed decisions to improve the learning environments in their districts.

We have worked with over 1,000 school districts across the United States. We continually strive to balance innovation with cost while providing effective and efficient services. We provide our clients with expertise, guidance, direction, and best practices.

Projections for over 570 districts entering Ohio Facilities Construction Commission (formerly Ohio School Facilities Commission) programs have been completed. The Commission was created in 1997 to administer the state's comprehensive public school construction program and assists districts in the planning, design, renovation, and construction of schools. **FutureThink** is the sole provider of enrollment projections for OFCC.

In working with the State of Arkansas, we projected enrollment regularly for approximately 225 districts as Arkansas continued to develop and refine a statewide educational facility planning process. District enrollments range from approximately 240 to 25,000 students.

In addition, **FutureThink** is an approved Enrollment Projection Provider for the State of Michigan.

Medfield Public Schools, MA

EDUCATION & EXPERIENCE

Tracy Healy, REFP

Tracy Healy is the Owner and President of **FutureThink**. Previously, she served as a vice president at DeJONG and was one of its founding members. Tracy focuses on demographics and facility planning projects.

With a master's degree in English, experience in city and regional planning, and time spent teaching in the classroom, Tracy is well-equipped to meet the needs of clients. She combines over 25 years of experience with her desire to enhance learning environments for students around the world.

One major area of focus for Tracy is in projecting student enrollment for school districts involved with the Ohio Facilities Construction Commission. To date, projections for over 570 districts have been completed, including the six major urban districts: Columbus, Cleveland, Cincinnati, Akron, Toledo, and Dayton. District enrollments in Ohio range from less than 100 to approximately 50,000 students. Tracy has worked with the Ohio Facilities Construction Commission team to develop ten-year enrollment projections for school districts entering one of its many programs since 1998.

Tracy has also worked as a Senior Planner for the City of Columbus Planning Office and taught English Composition at The Ohio State University and Columbus State Community College.

Notable Educational Planning Experience

► **Williamsburg-James City County Public Schools, VA**

Tracy has worked with WJCC Public Schools since 2005. Each year, ten-year enrollment projections for the District are updated. Projections are provided district-wide and by school. WJCC serves the students of the City of Williamsburg and the county of James City in 16 schools: 9 elementary, 4 middle and 3 high schools. Since 2005, two elementary schools, one middle school, and one high school have opened, and a middle school was replaced with a new building. The enrollment projections are used to identify placement of teaching staff each year, need for additional buildings in the long-term, and new building location.

► **Ohio Facilities Construction Commission**

In addition to projecting enrollment, Tracy has also provided a variety of educational planning services to OFCC. A sampling of these services includes: Creation of and Ongoing Revisions to the Online Questionnaire, Updates to the Design Manual, 21st Century Learning Environments Research & Planning Process, Survey of OSFC Districts regarding Community Use of Facilities, Switzerland of Ohio Local School District Community Engagement Process, and Educational Specifications for the Ohio School for the Deaf and the Ohio State School for the Blind.



Medfield Public Schools, MA

Complete Project Experience

Enrollment Projections

- ▶ Ohio Facilities Construction Commission – over 570 school districts
- ▶ State of Arkansas – 225 school districts
- ▶ Jonesboro Public Schools, AR
- ▶ Pocahontas Schools, AR
- ▶ Chelmsford Public Schools, MA
- ▶ Reading Public Schools, MA
- ▶ Waltham Public Schools, MA
- ▶ Wellesley Public Schools, MA
- ▶ Baltimore County Public Schools, MD
- ▶ Queen Anne’s County Public Schools, MD
- ▶ Battle Creek Public Schools, MI
- ▶ Jackson City Schools, MI
- ▶ Libby Schools, MT
- ▶ Northwood Schools, NH
- ▶ Newark Public Schools, NJ
- ▶ Buffalo Public Schools, NY
- ▶ Amherst Exempted Village Schools, OH
- ▶ Avon Local Schools, OH
- ▶ Avon Lake City Schools, OH
- ▶ Big Walnut Local Schools, OH
- ▶ Brecksville-Broadview Heights City Schools, OH
- ▶ Buckeye Valley Local Schools, OH
- ▶ Centerburg Local Schools, OH
- ▶ Centerville City Schools, OH
- ▶ Chagrin Falls Exempted Village Schools, OH
- ▶ Circleville City Schools, OH
- ▶ Cleveland Heights-University Heights City Schools, OH
- ▶ Columbus City Schools, OH
- ▶ Crestview Local Schools, OH
- ▶ Delaware Area Career Center, OH
- ▶ Delaware City Schools, OH
- ▶ Dublin City Schools, OH
- ▶ Eastern Gateway Community College, OH
- ▶ Edgewood City Schools, OH
- ▶ Fairfield Local Schools, OH
- ▶ Franklin City Schools, OH
- ▶ Goshen Local Schools, OH
- ▶ Grandview Heights City Schools, OH
- ▶ Granville Schools, OH
- ▶ Hudson City Schools, OH
- ▶ Jackson Local Schools, OH
- ▶ Lakewood City Schools, OH



Medfield Public Schools, MA

Enrollment Projections [continued]

- ▶ Lebanon City Schools, OH
- ▶ London City Schools, OH
- ▶ Lorain City Schools, OH
- ▶ Madison Local Schools, OH
- ▶ Mansfield City Schools, OH
- ▶ Marysville Schools, OH
- ▶ Mathews Local Schools, OH
- ▶ Mentor Exempted Village Schools, OH
- ▶ Monroe Local Schools, OH
- ▶ Montgomery County Schools, OH
- ▶ New Albany-Plain Local Schools, OH
- ▶ North Olmsted City Schools, OH
- ▶ North Royalton City Schools, OH
- ▶ Northwest Local Schools, OH
- ▶ Oakwood City Schools, OH
- ▶ Olentangy Local Schools, OH
- ▶ Olmsted Falls City Schools, OH
- ▶ Ottawa Hills Local Schools, OH
- ▶ Painesville City Schools, OH
- ▶ Perkins Local Schools, OH
- ▶ Pickerington City Schools, OH
- ▶ Princeton City Schools, OH
- ▶ Reading Community City Schools, OH
- ▶ Rocky River City Schools, OH
- ▶ South-Western City Schools, OH
- ▶ Sylvania City Schools, OH
- ▶ Teays Valley Local Schools, OH
- ▶ Three Rivers Local Schools, OH
- ▶ Vermilion Local Schools, OH
- ▶ Wadsworth City Schools, OH
- ▶ Washington State Community College, OH
- ▶ West Muskingum Local Schools, OH
- ▶ Westlake City Schools, OH
- ▶ Woodridge Local Schools, OH
- ▶ Wooster City Schools, OH
- ▶ Worthington City Schools, OH
- ▶ Abington Schools, PA
- ▶ Avon Grove Schools, PA
- ▶ Central Bucks Schools, PA
- ▶ School District of Cheltenham Township, PA
- ▶ Coatesville Local Schools, PA
- ▶ Conestoga Valley Local Schools, PA
- ▶ Crestwood Schools, PA

Medfield Public Schools, MA

Enrollment Projections [continued]

- ▶ Downingtown Area Schools, PA
- ▶ Easton Area Schools, PA
- ▶ Forest City Regional Schools, PA
- ▶ Hanover Area Schools, PA
- ▶ Lower Merion Schools, PA
- ▶ Lower Moreland Township Schools, PA
- ▶ Northampton Area Schools, PA
- ▶ Northwestern Lehigh Schools, PA
- ▶ Penn Manor Schools, PA
- ▶ Pennsbury Schools, PA
- ▶ School District of Philadelphia, PA
- ▶ Phoenixville Area Schools, PA
- ▶ Pottsgrove Schools, PA
- ▶ Rose Tree Media Schools, PA
- ▶ Southern Lehigh Schools, PA
- ▶ Tunkhannock Area Schools, PA
- ▶ Upper Perkiomen Schools, PA
- ▶ Wilson Area Schools, PA
- ▶ Campbell County Public Schools, VA
- ▶ Chesterfield County Public Schools, VA
- ▶ Dinwiddie County Public Schools, VA
- ▶ Isle of Wight County Public Schools, VA
- ▶ Manassas City Public Schools, VA
- ▶ Montgomery County Public Schools, VA
- ▶ Prince George County Public Schools, VA
- ▶ Williamsburg-James City County Public Schools, VA
- ▶ Marshall County Schools, WV
- ▶ McDowell County Schools, WV
- ▶ Nicholas County Schools, WV
- ▶ Raleigh County Schools, WV
- ▶ Wayne County Schools, WV
- ▶ Webster County Schools, WV
- ▶ Wood County Schools, WV

Enrollment Projection Training

- ▶ New Mexico Public School Facilities Authority, NM
- ▶ South-Western City Schools, OH
- ▶ Chesterfield County Public Schools, VA

Other Projects

- ▶ State of Connecticut – School Facility Construction Standards and Guidelines
- ▶ Bald Knob Schools, AR – Facility Plan
- ▶ Bradford Schools, AR – Facility Plan



Medfield Public Schools, MA

Other Projects [continued]

- ▶ Corning Schools, AR – Facility Plan
- ▶ Hillcrest Schools, AR – Facility Plan
- ▶ Jackson County Schools, AR – Facility Plan
- ▶ Marmaduke Schools, AR – Facility Plan
- ▶ Pangburn Schools, AR – Facility Plan
- ▶ Pocahontas Schools, AR – Facility Plan
- ▶ Rector Schools, AR – Facility Plan
- ▶ Amherst Elementary Schools, MA – Redistricting Review & Recommendations Study
- ▶ Battle Creek Public Schools, MI – GIS Mapping
- ▶ West Bloomfield Public Schools, MI – Elementary School Redistricting Study
- ▶ Las Cruces Public Schools, NM - New High School, Educational Specifications
- ▶ Ohio Facilities Construction Commission – 21st Century Workshops & Community Use Survey
- ▶ Austintown Local Schools, OH – High School Visioning
- ▶ Columbus City Schools, OH – Options Analysis & Target Area Profile Study
- ▶ Eastern Gateway Community College, OH – Demographic & Market Study
- ▶ Forest City Enterprises, OH – Consulting Services
- ▶ Immaculate Conception Elementary School, OH - Visioning Process
- ▶ Lakewood City Schools, OH – Elementary Boundary Study & Capacity Study
- ▶ NoNA – Student Yield Housing Study
- ▶ Our Lady of Peace Elementary School, OH – Visioning Process
- ▶ St. Brigid of Kildare Elementary School, OH – 21st Century Learning Environment Visioning Process
- ▶ Switzerland of Ohio Local Schools, OH – Community Engagement Process
- ▶ Washington State Community College - Demographic & Market Study
- ▶ Worthington City Schools, OH – Capacity Analysis
- ▶ Downingtown Area Schools, PA – Redistricting & Capacity Analysis
- ▶ Northampton Area Schools, PA – Redistricting Analysis
- ▶ Northwestern Lehigh Schools, PA – Redistricting Analysis
- ▶ Penn Manor Schools, PA – Build-out Analysis
- ▶ Marshall County Schools, WV – Capacity Analysis

Medfield Public Schools, MA

SCOPE OF SERVICES

Enrollment Projection Study

Review of Existing Enrollment Population Conditions & Demographic Analysis

FutureThink will collect, review, and analyze demographic data from the Medfield Public Schools; county, city, and township agencies; the State of Massachusetts; and the US Census. The following information will be collected to develop the enrollment projections:

- Last 10 years of enrollment by grade, by school (to be provided by Medfield Public Schools)
- Student database with student id number, address, grade, ethnicity, & any other attributes identified by MPS (to be provided by Medfield Public Schools)
- Birth counts
- Private school enrollment (to be provided by Medfield Public Schools)
- Home school enrollment
- Special education enrollment & programming (to be provided by Medfield Public Schools)
- Migration patterns
- Population trends
- Building permits for single-family & multi-family units over last 10 years
- Housing development (underway & known)
- Environmental factors

FutureThink will utilize and assess the information listed above to develop the following:

- Historical enrollment trend and grade-to-grade survival ratios
- Demographic profile of the District, to include, but is not limited to, the number of persons and households; average cost of households; and average household income and per capita income
- Housing profile of the District
- 10-year projected enrollment by grade, by school (high, moderate, and low projections)

OPTIONAL Geocoding of Student Data

FutureThink will "geocode" the most current student database, which is simply converting a standard address to a latitude and longitude within the GIS (geographic information system). The District's buildings and current school attendance boundaries will also be included.

Information such as land use, current infrastructure, and demographic data is also important. Some of this data is readily available while some of it can be provided by local and county planning offices and miscellaneous stakeholders.

Medfield Public Schools, MA

Additionally, student attributes, such as free/reduced lunch, ethnicity, special needs, and ELL, may be analyzed in relation to the distribution of students among schools to report quantitative demographic data regarding:

- Enrollment balance
- Socio-Economic balance
- Any other identified criteria

All of this information will be ported into an online web mapping application.

FutureThink will utilize and assess the information listed above to develop the following:

- Maps of the District illustrating student enrollment, distribution of students with identified attributes, infrastructure, and other relevant data.
- If the District has more than one year of data in the database, migration of students can also be identified.

Working Group Meetings (Virtual)

FutureThink will meet virtually with MPS staff to kick-off the project and discuss data needs.

FutureThink will meet virtually with MPS staff to review initial findings.

Final Report & Public Meeting (Virtual or In Person)

FutureThink will present findings and the final report to a joint meeting of the Medfield School Committee and the Medfield School Building Committee. A detailed explanation of the methodology, including the impact of housing development, will be provided.

Methodology & Accuracy

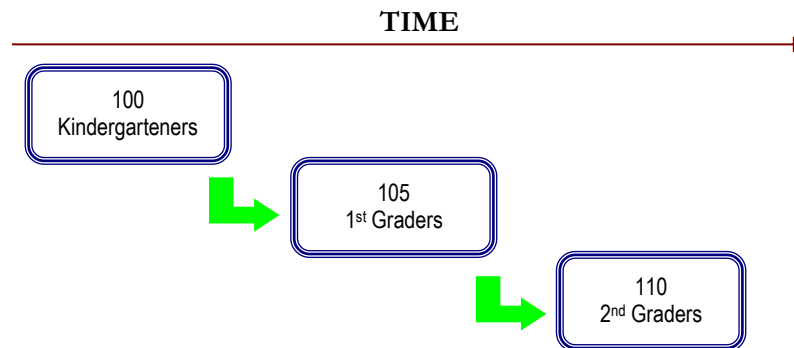
FutureThink has specialized in projecting student enrollment for over 17 years. Owner and President Tracy Healy has been projecting enrollment since the mid-1990s working with districts across the country. Several of these districts are repeat clients, attesting to the accuracy of the projections.

A combination of the student cohort and housing impact methodologies is proposed for Medfield Public Schools. Descriptions of each follow.

Cohort Survival Method

A cohort is a group of persons (in this case, students). The cohort survival projection methodology uses previous live birth data and historical student enrollments to “age” a known population or cohort throughout the school grades. For instance, a cohort begins when a group of kindergarteners enrolls in grade K and moves to first grade the following year, second grade the next year, and so on.

Medfield Public Schools, MA



A “survival ratio” is developed to track how this group of students grew or shrunk in number as they moved through the grade levels. By determining survival ratios for each grade transition [i.e., 1st to 2nd grade] over a ten-year period of time, patterns emerge and projection ratios can be developed to be used as a multiplier.

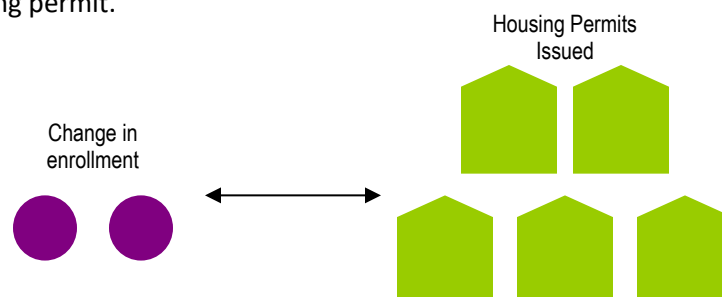
For example, if student enrollment has consistently increased from the 8th to the 9th grade over the past ten years, the survival ratios for each year would be greater than 100 percent. Through analysis of the survival ratios, the projection ratio is determined and is multiplied by the current 8th grade to develop a projection for next year’s 9th grade.

This methodology can be carried through to develop ten years of projection figures. Because there is not a grade cohort to follow for students coming into kindergarten, live birth counts are used to develop a survival ratio. Babies born five years previous to the kindergarten class are compared in number, and a ratio can be developed to project future kindergarten enrollments.

The cohort survival method is useful in areas where population is stable (relatively flat, growing steadily, or declining steadily), and where there have been no significant fluctuations in enrollment, births, and housing patterns from year to year.

Housing Impact

Enrollment projections can also be determined by analyzing the housing data for the areas that make up a school district. Yield factors can be established by comparing the historic change in enrollment from year to year divided by the total number of building or occupancy permits issued. For example, if student enrollment has increased by approximately 100 students each year and approximately 200 building permits have been issued each year for the past ten years, then the yield factor would be approximately .5 students per building permit.



Medfield Public Schools, MA

Once yield factors are established, the number of new students per year can be estimated by multiplying the yield factor by the number of projected new housing units. This method is effective when the rate of kindergarten enrollment far exceeds the live birth counts.

If housing demolitions are occurring in a district, they must also be considered. For instance, if housing demolitions/withdrawals have increased rapidly over recent years while new housing starts have remained relatively constant over many years, the conclusion may be that some of the new housing starts will simply be replacements for the families displaced by the demolitions. Of course, housing value and household composition would need to be further analyzed to confirm that this is indeed the case. It is possible that enrollment may remain flat or decline even though there is new housing occurring in the area.

Accuracy

FutureThink has several regular clients. Accuracy of the projections has been measured over the years and is identified in the tables below.

Williamsburg-James City County Public Schools
Projected vs. Actual Enrollment

	Projected	Actual	Difference	Percentage
October 2010 Report for 2011-12 School Year	10,800	10,649	151	1.40%
October 2011 Report for 2012-13 School Year	10,795	10,748	47	0.44%
November 2012 Report for 2013-14 School Year	10,992	10,998	-6	-0.05%
November 2013 Report for 2014-15 School Year	11,207	11,116	91	0.81%
December 2014 Report for 2015-16 School Year	11,316	11,303	13	0.11%
November 2015 Report for 2016-17 School Year	11,433	11,431	2	0.02%
November 2016 Report for 2017-18 School Year	11,478	11,459	19	0.17%
October 2017 Report for 2018-19 School Year	11,461	11,492	-31	-0.27%
October 2018 Report for 2019-20 School Year	11,470	11,448	22	0.19%
October 2019 Report for 2020-21 School Year	11,389	10,858	531	4.66%
November 2020 Report for 2021-22 School Year	10,929	11,018	-89	-0.81%
November 2021 Report for the 2022-23 School Year	11,116	11,308	-192	-1.73%
October 2022 Report for 2023-24 School Year	11,324	11,389	-65	-0.57%
Average				0.34%

Source: Williamsburg-James City County Public Schools, FutureThink

Dublin City School District
Projected vs. Actual Enrollment

	Projected	Actual	Difference	Percentage
January 2015 Report for 2015-16 School Year	15,744	15,775	-31	-0.20%
April 2017 Report for 2017-18 School Year	16,250	16,221	29	0.18%
January 2018 Report for 2018-19 School Year	16,606	16,532	74	0.45%
January 2019 Report for the 2019-20 School Year	16,939	16,883	56	0.33%
December 2019 Report for the 2020-21 School Year	16,842	16,298	544	3.23%
October 2020 Report for the 2021-22 School Year	16,663	16,487	176	1.06%
Average				0.84%

Source: Dublin City School District, FutureThink

Medfield Public Schools, MA

New Albany-Plain Local School District
Actual vs. Moderate Projected Enrollment, March 2018 Report

Grade	2021-22 Actual	2021-22 EP	Difference	Percentage
Pre-K	177	128	49	27.68%
K	307	334	-27	-8.79%
1	348	418	-70	-20.11%
2	367	419	-52	-14.17%
3	377	418	-41	-10.88%
4	393	406	-13	-3.31%
5	327	347	-20	-6.12%
6	397	392	5	1.26%
7	382	362	20	5.24%
8	378	367	11	2.91%
9	424	405	19	4.48%
10	356	360	-4	-1.12%
11	459	413	46	10.02%
12	418	402	16	3.83%
Pre-K - 12 Total	5,110	5,171	-61	-1.19%

Source: New Albany-Plain Local School District, FutureThink

Prince George County Public Schools
Actual vs. Projected Enrollment - February 2023 Moderate

Grade	2023-24 Actual	2023-24 Moderate Projection	Difference	Percentage
Pre-K	166	158	8	4.82%
K	475	485	-10	-2.11%
1	449	463	-14	-3.12%
2	468	448	20	4.27%
3	464	451	13	2.80%
4	465	445	20	4.30%
5	481	493	-12	-2.49%
6	481	484	-3	-0.62%
7	456	463	-7	-1.54%
8	458	452	6	1.31%
9	500	469	31	6.20%
10	473	470	3	0.63%
11	465	465	0	0.00%
12	440	438	2	0.45%
Total	6,241	6,184	57	0.91%

Source: Prince George County Public Schools, FutureThink

please note: the Regional Center students are split between 11th and 12th grade in the projected enrollment

Grandview Heights City School District
Actual vs. Projected Enrollment, February 2018 Report

Grade	2022-23 Actual	2022-23 EP	Difference	Percentage
K	89	94	-5	-5.62%
1	90	91	-1	-1.11%
2	98	85	13	13.27%
3	91	99	-8	-8.79%
4	76	88	-12	-15.79%
5	110	123	-13	-11.82%
6	88	85	3	3.41%
7	88	86	2	2.27%
8	79	81	-2	-2.53%
9	83	85	-2	-2.41%
10	82	81	1	1.22%
11	86	87	-1	-1.16%
12	88	73	15	17.05%
K - 12 Total	1,148	1,158	-10	-0.87%
Ungraded	0	1	-1	
Grand Total	1,148	1,159	-11	-0.96%

Source: Grandview Heights City School District, FutureThink



Medfield Public Schools, MA

REFERENCES

Ohio Facilities Construction Commission

30 West Spring Street, 4th Floor

Columbus, OH 43215

614-466-6290

Contact: Melanie Drerup, Chief of Planning

Email: Melanie.Drerup@ofcc.ohio.gov

Accuracy Rate: On average within 3% (projections completed for over 570 districts over 25 years)

Williamsburg-James City County Public Schools, VA

PO Box 8783

Williamsburg, VA 23187

757-603-6418

Contact: Ms. Rene Ewing, CFO

Email: Rene.Ewing@wjccschools.org

Accuracy Rate: Within less than 1% - 2% (given a range of projections—high, moderate, low)

Downingtown Area School District, PA

540 Trestle Place

Downingtown, PA 19335

610-269-8460

Contact: Mr. Dave Matyas, Business Manager

Email: dmatyas@dasd.org

New Albany-Plain Local Schools

55 North High Street

New Albany, OH 43504

614-855-2040

Contact: Ms. Rebecca Jenkins, Treasurer

Email: jenkins.5@napls.us

Accuracy Rate: Within 1-3%

Medfield Public Schools, MA

SCHEDULE

Schedule

The report will take approximately 6-8 weeks once enrollment data is received from the District.

Mid-late February – Project Kick-off Meeting

February/March – Data Collection & Draft Report

March – Meeting to Review Findings & Provide Final Written Report

April – Presentation to Medfield School Committee & Medfield School Building Committee

FutureThink will meet the completion deadline of Spring 2024 for the written report. Please let this signature certify this statement.

1/24/24

Date



Tracy V. Healy
President/Owner
FutureThink, LLC

Medfield Public Schools, MA

COST OF SERVICES

Administrative Fee

The maximum obligation for enrollment projection services and the in-person public presentation is **\$23,500**.

Enrollment Projections by Grade, By School (high, moderate, low) - \$16,000 (80 hours x \$200)

In-Person Public Presentation – \$7,500 (plus travel expenses)

<i>Option 1 Services</i>	<i>Cost</i>
Enrollment Projection Services	\$16,000
In-Person Public Presentation	\$7,500
Total	\$23,500

If the District chooses to include the optional geocoding of students & online mapping tool, the maximum obligation would increase to **\$31,900**.

OPTIONAL Geocoding of Students & Online Mapping Tool - \$8,400 (48 hours x \$175)

<i>Option 2 Services</i>	<i>Cost</i>
Enrollment Projection Services	\$16,000
Virtual Public Presentation	\$7,500
Subtotal	\$23,500
Option: Geocoding & Online Mapping Tool	\$8,400
Total	\$31,900

If the District opts for a virtual public presentation instead of in-person, the \$7,500 can be subtracted from the maximum obligation for a total of either **\$16,000** or **\$24,400**.

<i>Option 3 Services</i>	<i>Cost</i>
Enrollment Projection Services	\$16,000
Virtual Public Presentation	\$0
Total	\$16,000

<i>Option 4 Services</i>	<i>Cost</i>
Enrollment Projection Services	\$16,000
Virtual Public Presentation	\$0
Subtotal	\$16,000
Option: Geocoding & Online Mapping Tool	\$8,400
Total	\$24,400

Medfield Public Schools, MA

Hourly rates are as follows:

- ▶ Principal - \$200
- ▶ Project Director - \$175
- ▶ GIS Manager - \$175
- ▶ Planner/GIS Analyst - \$125
- ▶ Support Staff - \$100

Travel expenses are estimated to be approximately \$2,000. (This amount includes airfare, hotel for one night, car rental, parking, and meals.) Such expenses will be billed at cost.

Other Materials

Administrative and ancillary charges will not exceed \$500. Such expenses will be submitted for pre-approval to Medfield Public Schools.

Estimated Total Maximum

POTENTIAL TOTAL MAXIMUM - \$16,000 to \$31,900

Upon approval of this contract, an invoice will be issued on the first of each month. Payment is due upon receipt.


Medfield Public Schools, MA

AUTHORIZATION

FutureThink requires that a signed agreement be retained before engaging in any activities. Upon approval of this contract, please sign and return one copy to the **FutureThink** office.

Authorized Person to sign for **FutureThink**:

1/24/24
Date



Tracy V. Healy
President
FutureThink, LLC

On behalf of **Medfield School Building Committee/Medfield Public Schools**, I hereby accept this proposal as outlined herein:

Date

Authorized Agent
MSBC/Medfield Public Schools



FutureThink

PLAN TO EMPOWER

FINAL REPORT



Wellesley Public Schools
Enrollment Projection Update
September 23, 2022

INTRODUCTION

FutureThink was contracted to develop an update to the enrollment projections for the Wellesley Public Schools.

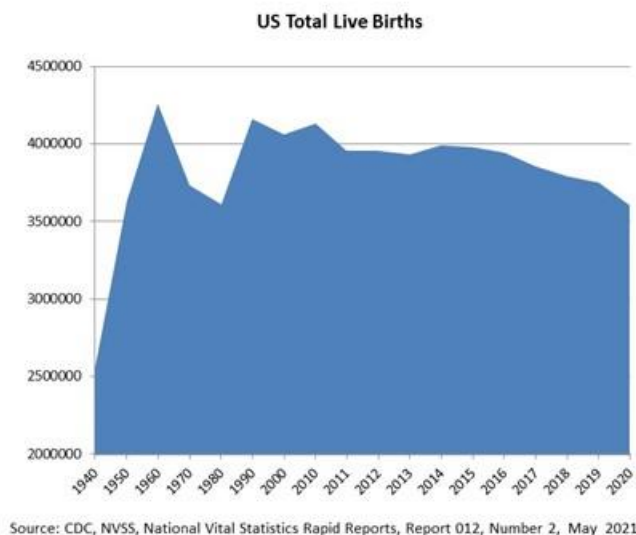
This report contains the most likely ten-year enrollment projections, which were developed for the Wellesley Public Schools by analyzing the following data:

- ▶ Historical enrollment
- ▶ Non-public school enrollment
- ▶ Birth counts
- ▶ Community demographics
- ▶ Housing information

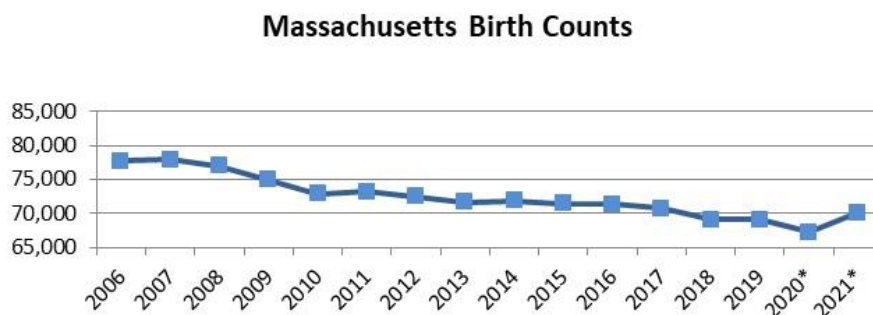
The projections presented in this report are meant to serve as a planning tool for the future and represent the most likely direction of the District.

NATIONAL & MASSACHUSETTS TRENDS IN ENROLLMENT

Tracing the landscape of the country's public school enrollment back over the past 80 years reveals demographic, economic, and social changes. The United States as a whole continues to undergo major shifts in public student enrollment. The baby boom of the late 1940s and 50s was followed by the baby bust of the 1960s and 70s. An "echo" baby boom occurred in the 1980s, which then was followed by the echo baby bust from 1990 to 2000. There was a slight uptick from 2000 to 2010. There has been steady decline since 2014. The decrease from 2019 to 2020 was approximately 4 percent.



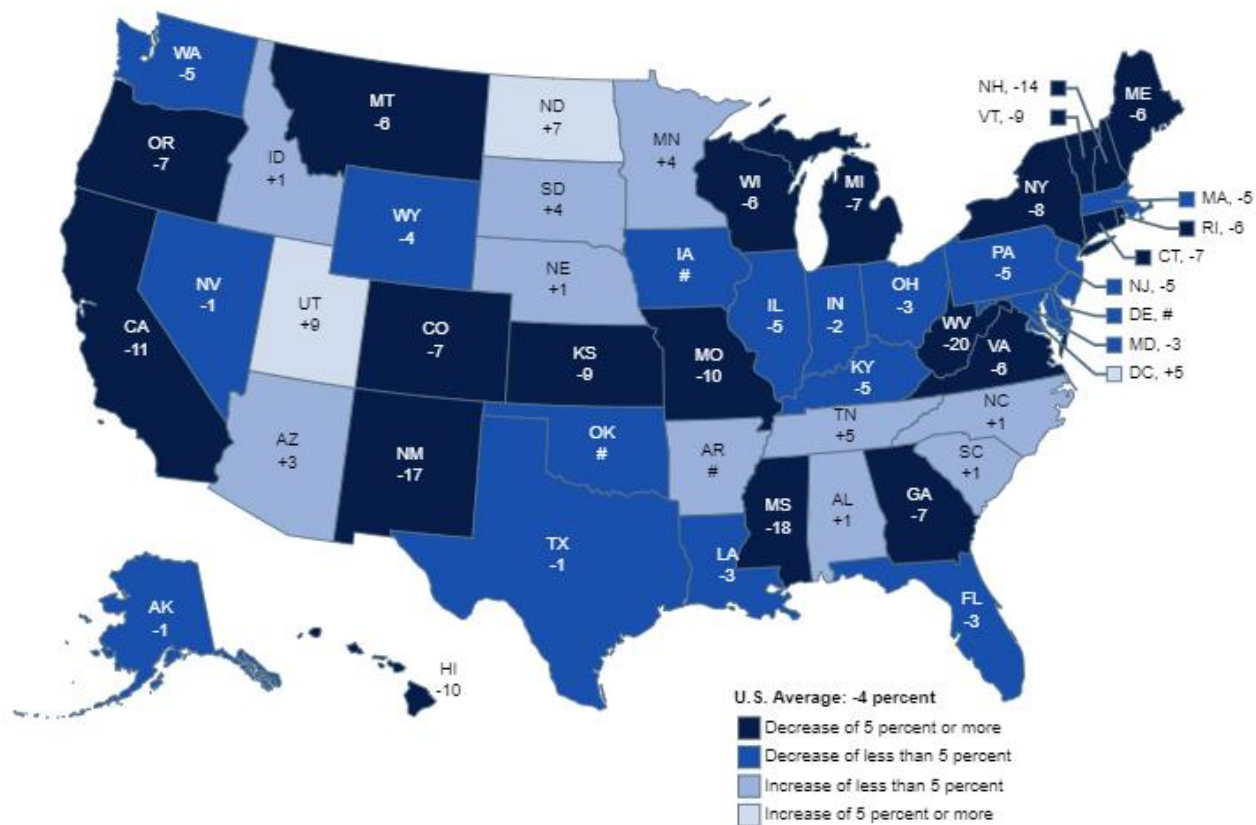
Massachusetts has experienced a similar trend in birth counts as seen around the country. Births peaked in 2007 but then declined to an all-time low of 67,220 in 2020 with an uptick in 2021. Please note data for 2020 and 2021 is preliminary.



In 2017-18, approximately 50.3 million students were enrolled in grades Pre-K-12 in the United States. Overall, enrollment is projected to increase by approximately 1% by the 2028-29 school year.

The figure below illustrates the projected change in Pre-K-12 public school enrollment from the 2020-21 to the 2030-31 school year. Growth is expected to continue primarily in parts of the southeast and upper Midwest. Massachusetts is projected to experience a decrease of 5 percent.

Figure 3. Projected percentage change in public elementary and secondary school enrollment, categorized into specific ranges, by state: Fall 2020 to fall 2030



Rounds to zero.

NOTE: U.S. average is for the 50 states and the District of Columbia. Data include both traditional public schools and public charter schools. Includes imputations for nonreported prekindergarten enrollment in California and Oregon for fall 2020. Includes imputations for nonreported enrollment for all grades in Illinois for fall 2020. Projections in this figure were calculated after the onset of the coronavirus pandemic and take into account the expected impacts of the pandemic. Categorizations are based on unrounded percentages.

SOURCE: U.S. Department of Education, National Center for Education Statistics, Common Core of Data (CCD), "State Nonfiscal Survey of Public Elementary/Secondary Education," 2020-21 Preliminary; and State Public Elementary and Secondary Enrollment Projection Model, through 2030. See *Digest of Education Statistics 2021*, table 203.20.

ACTUAL VS. PROJECTED ENROLLMENT COMPARISON

The latest enrollment projection report was completed in January 2020 for Wellesley Public Schools right before the onset of the pandemic. As a result of the pandemic, the majority of school districts across the country saw declines in their enrollments. Wellesley Public Schools lost a total of 622 students from the 2019-20 to the 2022-23 school year.

The actual enrollment for the 2022-23 school year is lower than the low projection from the January 2020 report. The moderate/most likely projection was off by 522 students or approximately 13 percent. The low projection was off by 314 students or approximately 8 percent. The greatest differences were at grades K, 2, 3, and 6 in both projections.

Wellesley Public Schools
Actual vs. Projected Enrollment - Most Likely/Moderate

Grade	2022-23 Actual	2022-23 Enrollment Projection	Difference	Percentage
K	247	310	-63	-25.51%
1	301	328	-27	-8.97%
2	269	355	-86	-31.97%
3	299	356	-57	-19.06%
4	309	343	-34	-11.00%
5	323	370	-47	-14.55%
6	297	353	-56	-18.86%
7	308	343	-35	-11.36%
8	323	362	-39	-12.07%
9	374	398	-24	-6.42%
10	351	379	-28	-7.98%
11	366	377	-11	-3.01%
12	369	384	-15	-4.07%
K - 12 Total	4,136	4,658	-522	-12.62%

Source: Wellesley Public Schools, FutureThink January 2020 Report

Wellesley Public Schools
Actual vs. Projected Enrollment - Low

Grade	2022-23 Actual	2022-23 Enrollment Projection	Difference	Percentage
K	247	297	-50	-20.24%
1	301	308	-7	-2.33%
2	269	326	-57	-21.19%
3	299	335	-36	-12.04%
4	309	323	-14	-4.53%
5	323	350	-27	-8.36%
6	297	341	-44	-14.81%
7	308	328	-20	-6.49%
8	323	347	-24	-7.43%
9	374	385	-11	-2.94%
10	351	369	-18	-5.13%
11	366	365	1	0.27%
12	369	376	-7	-1.90%
K - 12 Total	4,136	4,450	-314	-7.59%

Source: Wellesley Public Schools, FutureThink January 2020 Report



HISTORICAL ENROLLMENT

Over the past ten years, student enrollment in the Wellesley Public Schools increased for the first 3 years, reaching its peak in the 2015-16 school year at 4,975 students. Since the 2015-16 school year, enrollment has decreased by 839 students or approximately 17 percent. Sixty-seven percent of the loss was at the elementary school level.

Total enrollment for the 2022-23 school year is 4,136 students. The following tables illustrate the District's enrollment history from 2013-14 through 2022-23.

**Wellesley Public Schools
Historical Enrollment**

Grade	2013-14	2014-15	2015-16	2016-17	2017-18	2018-19	2019-20	2020-21	2021-22	2022-23*
K	363	334	324	345	338	324	327	219	287	247
1	386	395	365	343	353	358	331	281	257	301
2	384	398	410	375	353	358	366	315	288	269
3	399	393	406	414	374	353	359	340	308	299
4	376	409	394	393	409	373	345	332	320	309
5	433	374	408	386	382	409	366	323	322	323
6	390	423	363	393	379	394	408	334	315	297
7	371	383	416	351	395	379	382	382	323	308
8	403	372	374	403	356	386	375	373	370	323
9	360	409	384	375	397	355	376	363	342	374
10	381	357	398	384	385	405	350	367	357	351
11	336	381	354	400	385	379	393	340	361	366
12	358	330	379	355	402	390	380	393	336	369
K - 12 Total	4,940	4,958	4,975	4,917	4,908	4,863	4,758	4,362	4,186	4,136

Source: Wellesley Public Schools

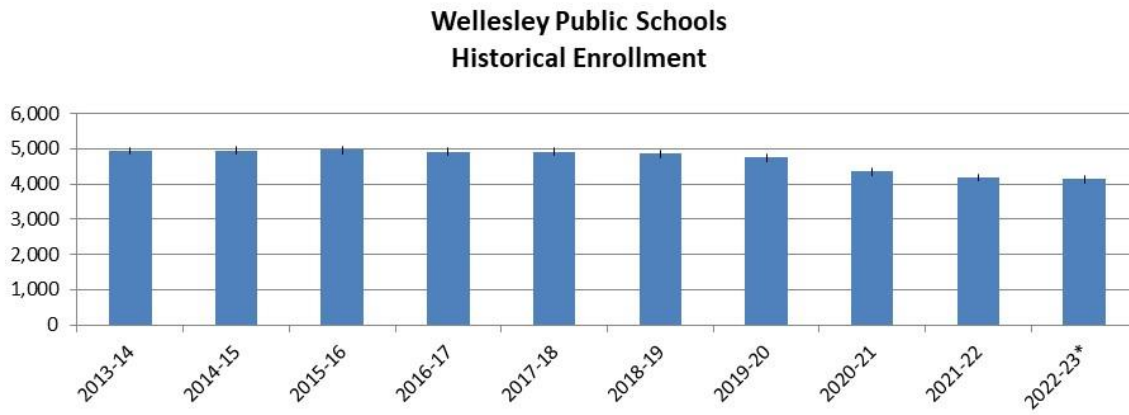
**Wellesley Public Schools
Historical Enrollment by Grade Group**

Grade	2013-14	2014-15	2015-16	2016-17	2017-18	2018-19	2019-20	2020-21	2021-22	2022-23*
K - 5	2,341	2,303	2,307	2,256	2,209	2,175	2,094	1,810	1,782	1,748
6 - 8	1,164	1,178	1,153	1,147	1,130	1,159	1,165	1,089	1,008	928
9 - 12	1,435	1,477	1,515	1,514	1,569	1,529	1,499	1,463	1,396	1,460
K - 12 Total	4,940	4,958	4,975	4,917	4,908	4,863	4,758	4,362	4,186	4,136

Source: Wellesley Public Schools

* 9/2 Enrollment

The following graph illustrates the District's K – 12 enrollment history from 2013-14 through 2022-23.



PRIVATE/PAROCHIAL ENROLLMENT

Since 2012-13, the number of Wellesley Public Schools students attending private or parochial schools has increased from 1,183 to 1,295 students. Private/parochial school enrollment is currently approximately 24% of total enrollment, up from 20% over the past several years. This enrollment should continue to be monitored as it may have an impact on District enrollment in the future.

It should also be noted that the gain in private school enrollment does not account for all the loss Wellesley Public Schools has seen the last three years. The Wellesley Public Schools enrollment is down 13% from the 2019-20 school year to today. Please note the 2022-23 private school enrollment is not yet available.

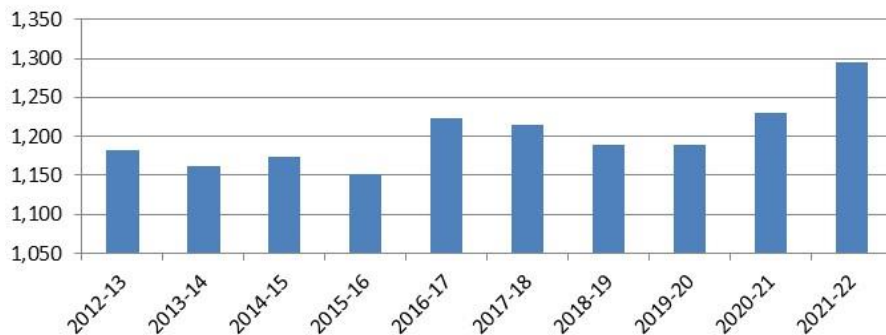
Wellesley Public Schools

Private/Parochial School Enrollment as Percentage of Total School Enrollment

Grade	2012-13	2013-14	2014-15	2015-16	2016-17	2017-18	2018-19	2019-20	2020-21	2021-22
Private/Parochial School	1,183	1,162	1,174	1,152	1,224	1,215	1,190	1,190	1,230	1,295
Wellesley Public Schools	4,857	4,940	4,958	4,975	4,917	4,908	4,863	4,758	4,362	4,186
Total	6,040	6,102	6,132	6,127	6,141	6,123	6,053	5,948	5,592	5,481
Percentage	20%	19%	19%	19%	20%	20%	20%	20%	22%	24%

Source: DESE, Massachusetts Department of Education, Wellesley Public Schools

Wellesley Public Schools Students Attending Private/Parochial Schools



Private school enrollment was also obtained for the school years 2002-03 through 2011-12. In reviewing the data, the last time the percentage of private school students was over 20% was in the 2010-11 school year. The tables below illustrate the number of private school students by grade and by grade group. The highest enrollment by grade is highlighted. There is no discernible pattern—the highest enrollment moves from grade 11 to 9 to 6 to K then back down to grades 6-10.

**Wellesley Public Schools
Private/Parochial Historical Enrollment**

Grade	2002-03	2003-04	2004-05	2005-06	2006-07	2007-08	2008-09	2009-10	2010-11	2011-12
K	46	74	60	79	30	82	42	49	73	42
1	41	58	60	59	78	62	65	54	58	55
2	51	60	56	67	69	72	66	69	54	57
3	40	78	63	58	93	69	73	58	69	54
4	41	65	70	64	69	80	71	76	58	74
5	41	67	67	75	82	70	88	88	91	69
6	36	69	73	63	104	93	96	99	92	102
7	62	70	66	74	77	104	98	102	108	105
8	72	68	71	73	81	104	102	101	112	110
9	45	83	69	71	71	94	106	124	105	109
10	59	58	67	65	69	82	100	90	222	100
11	75	61	63	71	71	84	90	98	91	101
12	45	73	68	68	74	80	71	74	93	89
K - 12 Total	654	884	853	887	968	1,076	1,068	1,082	1,226	1,067
WPS Enrollment	3,880	4,174	4,314	4,274	4,537	4,531	4,798	4,782	4,638	4,692
Percentage	14%	17%	17%	17%	18%	19%	18%	18%	21%	19%

Source: Wellesley Public Schools, January Count

**Wellesley Public Schools
Private/Parochial Historical Enrollment by Grade Group**

Grade	2002-03	2003-04	2004-05	2005-06	2006-07	2007-08	2008-09	2009-10	2010-11	2011-12
K - 5	260	402	376	402	421	435	405	394	403	351
6 - 8	170	207	210	210	262	301	296	302	312	317
9 - 12	224	275	267	275	285	340	367	386	511	399
K - 12 Total	654	884	853	887	968	1,076	1,068	1,082	1,226	1,067

Source: Wellesley Public Schools, January Count

The tables below illustrate the number of private school students by grade and by grade group for the 2012-13 through 2021-22 school years. There is a more discernible pattern during this timeframe with the highest enrollments occurring in grades 7-12.

Wellesley Public Schools
Private/Parochial Historical Enrollment

Grade	2012-13	2013-14	2014-15	2015-16	2016-17	2017-18	2018-19	2019-20	2020-21	2021-22
K	76	49	54	67	53	54	43	46	57	56
1	47	74	55	42	53	56	45	43	64	59
2	57	54	57	48	65	53	68	47	54	79
3	72	61	56	65	64	50	57	72	60	64
4	61	74	64	61	68	40	58	67	91	76
5	82	67	81	64	91	86	68	71	87	102
6	97	101	85	100	83	107	96	85	110	98
7	130	110	118	111	123	105	113	115	103	109
8	117	134	116	124	114	146	112	122	115	115
9	115	117	130	111	145	116	153	123	112	138
10	112	109	129	130	110	142	118	150	120	121
11	107	110	124	121	133	117	136	116	141	132
12	110	102	105	108	122	143	123	133	116	146
K - 12 Total	1,183	1,162	1,174	1,152	1,224	1,215	1,190	1,190	1,230	1,295
WPS Enrollment	4,857	4,940	4,958	4,975	4,917	4,908	4,863	4,758	4,362	4,186
Percentage	20%	19%	19%	19%	20%	20%	20%	20%	22%	24%

Source: Wellesley Public Schools, January Count

Wellesley Public Schools
Private/Parochial Historical Enrollment by Grade Group

Grade	2012-13	2013-14	2014-15	2015-16	2016-17	2017-18	2018-19	2019-20	2020-21	2021-22
K - 5	395	379	367	347	394	339	339	346	413	436
6 - 8	344	345	319	335	320	358	321	322	328	322
9 - 12	444	438	488	470	510	518	530	522	489	537
K - 12 Total	1,183	1,162	1,174	1,152	1,224	1,215	1,190	1,190	1,230	1,295

Source: Wellesley Public Schools, January Count

LIVE BIRTH DATA

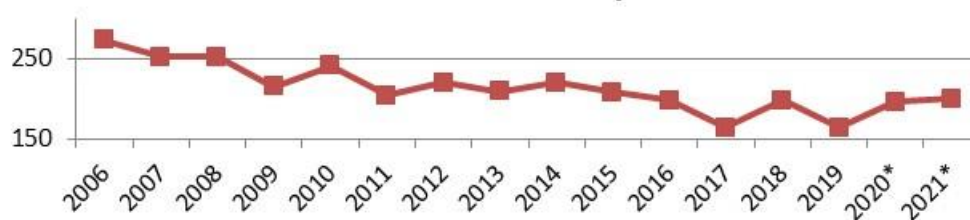
The following table and graph include the live birth counts for Wellesley residents from 2006 through 2021. The counts have decreased from a high of 273 in 2006 to a low of 165 in 2017 and 2019. Lower birth counts may result in lower Kindergarten classes in the future. The children born in 2018-2021 represent future Kindergarteners in the 2023-24 through 2026-27 school years.

**Wellesley Public Schools
Birth Counts for Wellesley Residents
2006-2021**

Year	Total
2006	273
2007	252
2008	252
2009	215
2010	241
2011	204
2012	220
2013	209
2014	220
2015	208
2016	198
2017	165
2018	198
2019	165
2020*	196
2021*	200

Source: MA Dept. of Public Health; Birth
Characteristics: Resident Births, Town of Wellesley
*preliminary

**Wellesley Public Schools
Birth Counts for Wellesley Residents**



DEMOGRAPHICS

Wellesley has a significantly higher per capita income and much lower percentage of persons below poverty than those of the county and state. Norfolk County and Wellesley have both seen population growth from 2000 through 2020, approximately 12% and 11%, respectively. While the overall population has increased, so has the age of the population. The number of children has declined and is expected to continue to decline.

General Demographic Information

	Wellesley	Norfolk County	Massachusetts
Per Capita Income	\$89,101	\$55,860	\$45,555
Median Household Income	\$213,684	\$105,320	\$84,385
Persons Below Poverty	4.2%	6.0%	9.8%

Source: US Census, American Community Survey, 2020 5-Year Estimates

Total Population

	2000 Census	2010 Census	2020 Census
Norfolk County	650,308	670,850	725,981
Wellesley	26,613	27,982	29,550

Source: US Census, American Community Survey, 2000, 2010 & 2020 Summary File 1

Also included are block group estimates and projections provided by ESRI (originally known as the Environmental Systems Research Institute, Inc.) ESRI uses a time series of estimates from the U.S. Census Bureau that includes the latest estimates and inter-censal estimates adjusted for error of closure. The Census Bureau's time series is consistent, but testing has revealed improved accuracy by using a variety of sources to track county population trends.

ESRI also employs a time series of building permits and housing starts plus residential deliveries. Data sources are integrated and then analyzed by Census Block Groups.

Sources of data include:

- ▶ Supplementary Surveys of the Census Bureau
- ▶ Bureau of Labor Statistics' (BLS) Local Area Unemployment Statistics
- ▶ BLS Occupational Employment Statistics
- ▶ InfoUSA
- ▶ U.S. Bureau of the Census' Current Population Survey
- ▶ National Planning Association Data Service

Below is a list of definitions as they appear on the U.S. Census Bureau website, to aid in interpretation of the following tables and maps.

Household:

A household includes all the people who occupy a housing unit as their usual place of residence.

Average family size:

A measure obtained by dividing the number of members of families by the total number of families (or family householders).

Family household (Family):

A family includes a householder and one or more people living in the same household who are related to the householder by birth, marriage, or adoption. All people who are related to the householder are regarded as members of his or her family. A family household may contain people not related to the householder, but those people are not included as part of the householder's family in census tabulations. Thus, the number of family households is equal to the number of families, but family households may include more members than do families. A household can contain only one family for purposes of census tabulations. Not all households contain families since a household may comprise a group of unrelated people or one person living alone.

Householder:

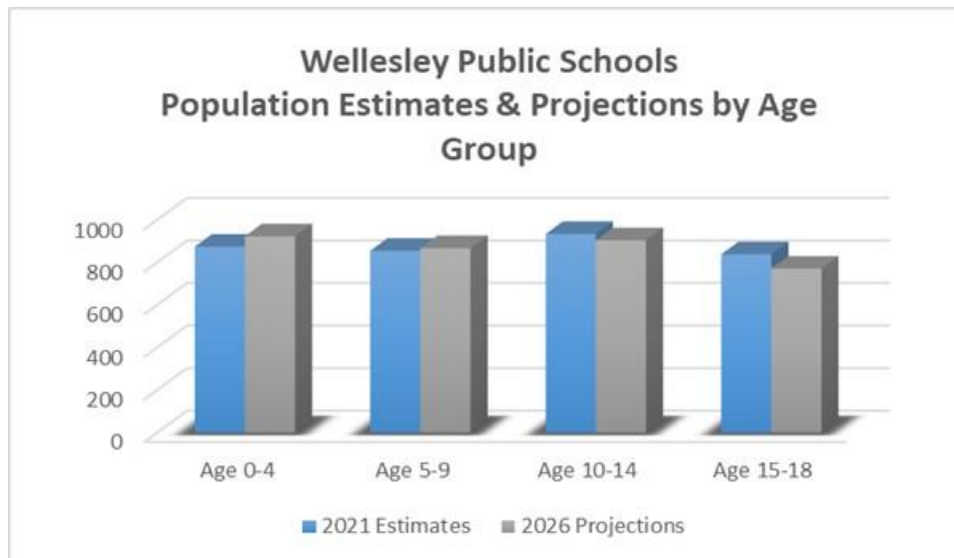
The person, or one of the people, in whose name the home is owned, being bought, or rented. If there is no such person present, any household member 15 years old and over can serve as the householder for the purposes of the census. Two types of householders are distinguished: a family householder and a nonfamily householder. A family householder is a householder living with one or more people related to him or her by birth, marriage, or adoption. The householder and all people in the household related to him are family members. A nonfamily householder is a householder living alone or with nonrelatives only.

The following tables illustrate the current estimates and 5-year population projections based on block groups that comprise the school district, indicating areas of current and projected growth or decline. The tables include total population, selected age group populations, median age, household income, family size, and total family households.

The total population in the District is 28,927. This population is projected to increase by 375 people, or approximately 1% over a 5-year period. The 0-18 year-old population in the District currently totals 8,038. This population is projected to decrease by 243 people, or 3 percent. The median age is projected to increase by 1.5%, from 39.2 to 39.8 years of age.

Wellesley Public Schools	2021 Estimates	2026 Projections	Estimated Change 2021-26	Estimated Change 2021-26 (%)
Total Population	28,927	29,302	375	1.3%
Age 0-4	1,401	1,451	50	3.6%
Age 5-9	1,915	1,962	47	2.5%
Age 10-14	2,410	2,226	-184	-7.6%
Age 15-18	2,312	2,156	-156	-6.7%
Total Age 0-18	8,038	7,795	-243	-3.0%
Median Age	39.2	39.8	0.6	1.5%

Source: ESRI



Median and average household incomes in the District are projected to increase by less than 1% and 10%, respectively over a 5-year period. The average family size is projected to increase by less than 1%, and the number of family households is projected to increase by 1 percent.

Wellesley Public Schools	2021 Estimates	2026 Projections	Estimated Change 2021-26	Estimated Change 2021-26 (%)
Median Household Income	\$199,767	\$200,001	\$234	0.1%
Average Household Income	\$262,480	\$288,837	\$26,357	10.0%
Average Family Size	3.29	3.31	0.02	0.6%
Total Family Households	6,864	6,932	68	1.0%

Source: ESRI

All data points suggest a decline in District enrollment due to lower birth counts, projected decline in school age population, projected increase in non-school age population, and stable average family size.

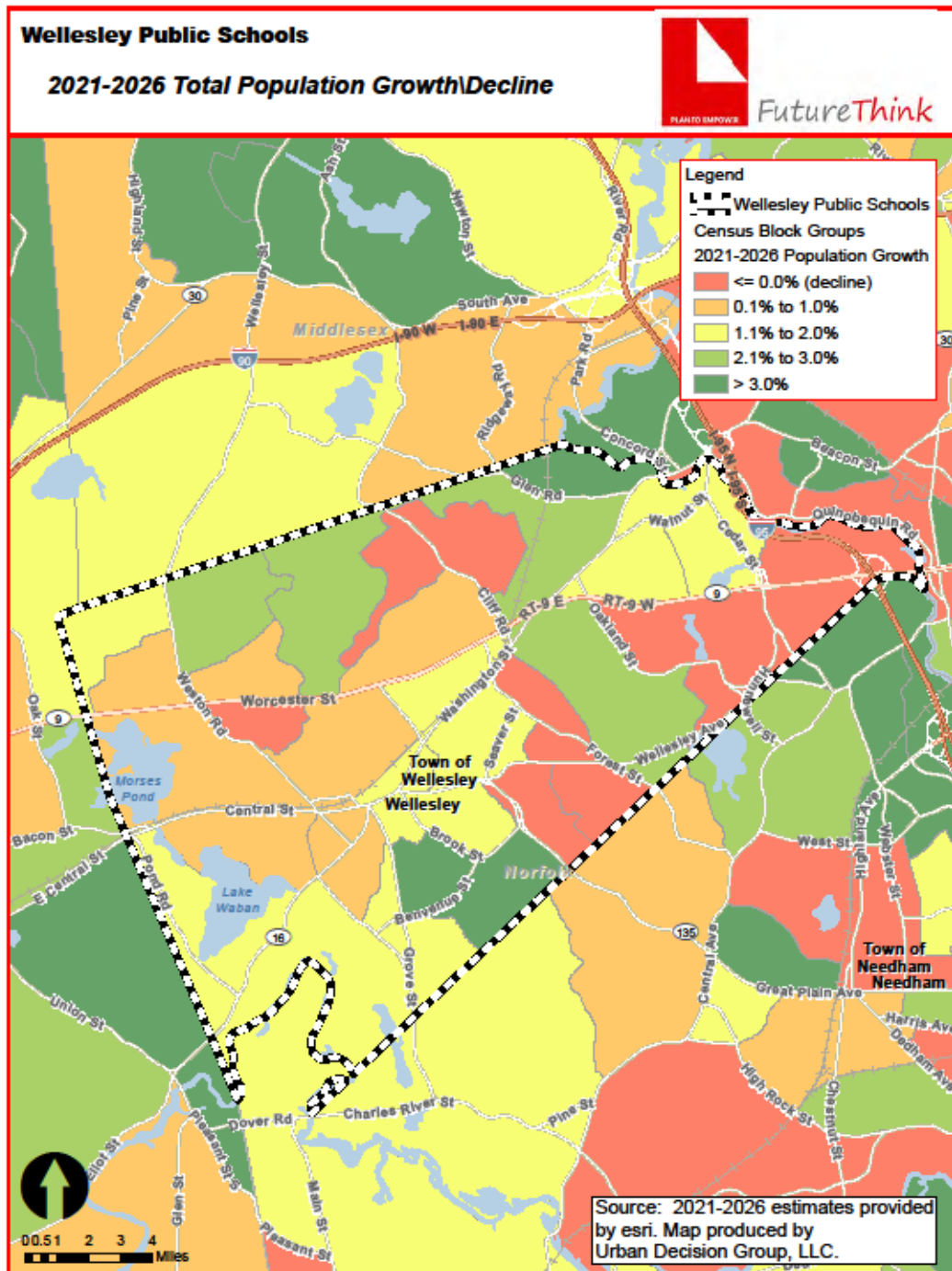
The maps on the following pages illustrate the data identified in the tables. The color coding identifies areas within the District that may be increasing or decreasing at different rates than others.

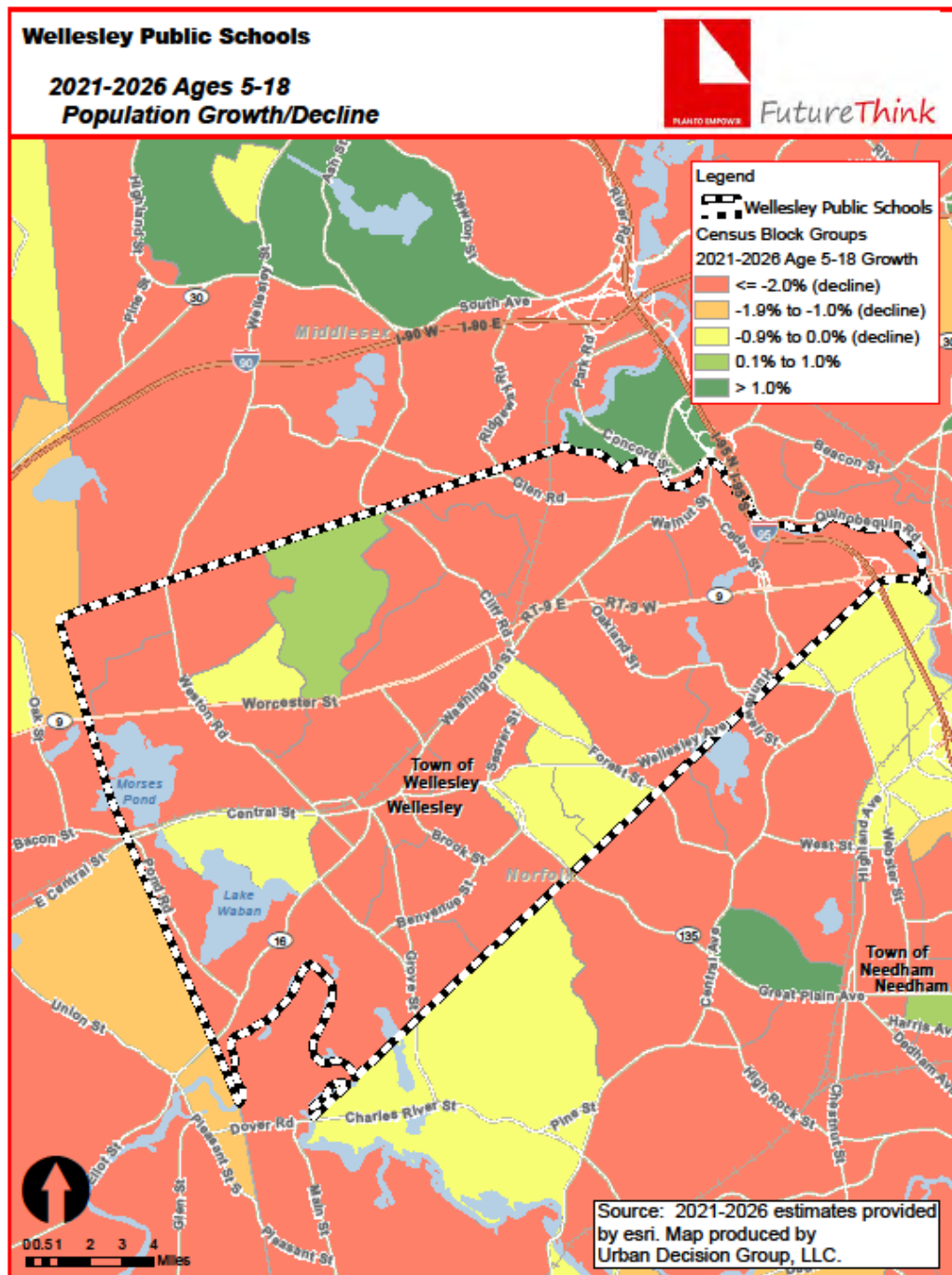
The first map shows the projected change in the total population from 2021 to 2026. There are a few areas of decline identified in red. The rest of the District is projected to gain population—the vast majority between 0.1 and 3 percent. There are two areas projected to gain more than 3% in the overall population identified in dark green.

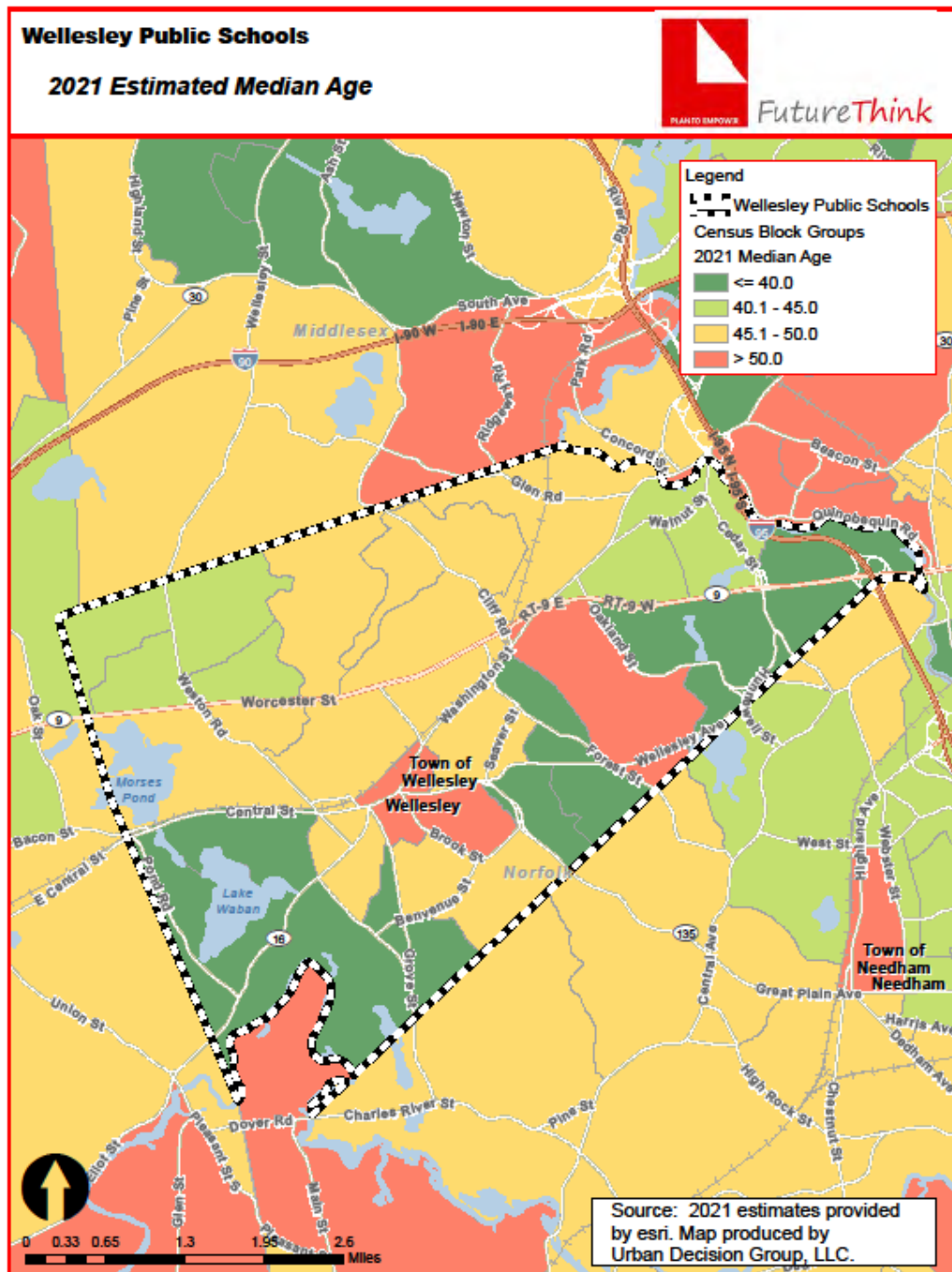
However, the school age population illustrated in the second map shows mostly decline and little growth. The red areas indicate areas of decline of greater than 2 percent from 2021 to 2026. The yellow areas indicate population loss of between 0 and 0.9 percent. The one light green area shows growth of 0.1 to 1 percent.

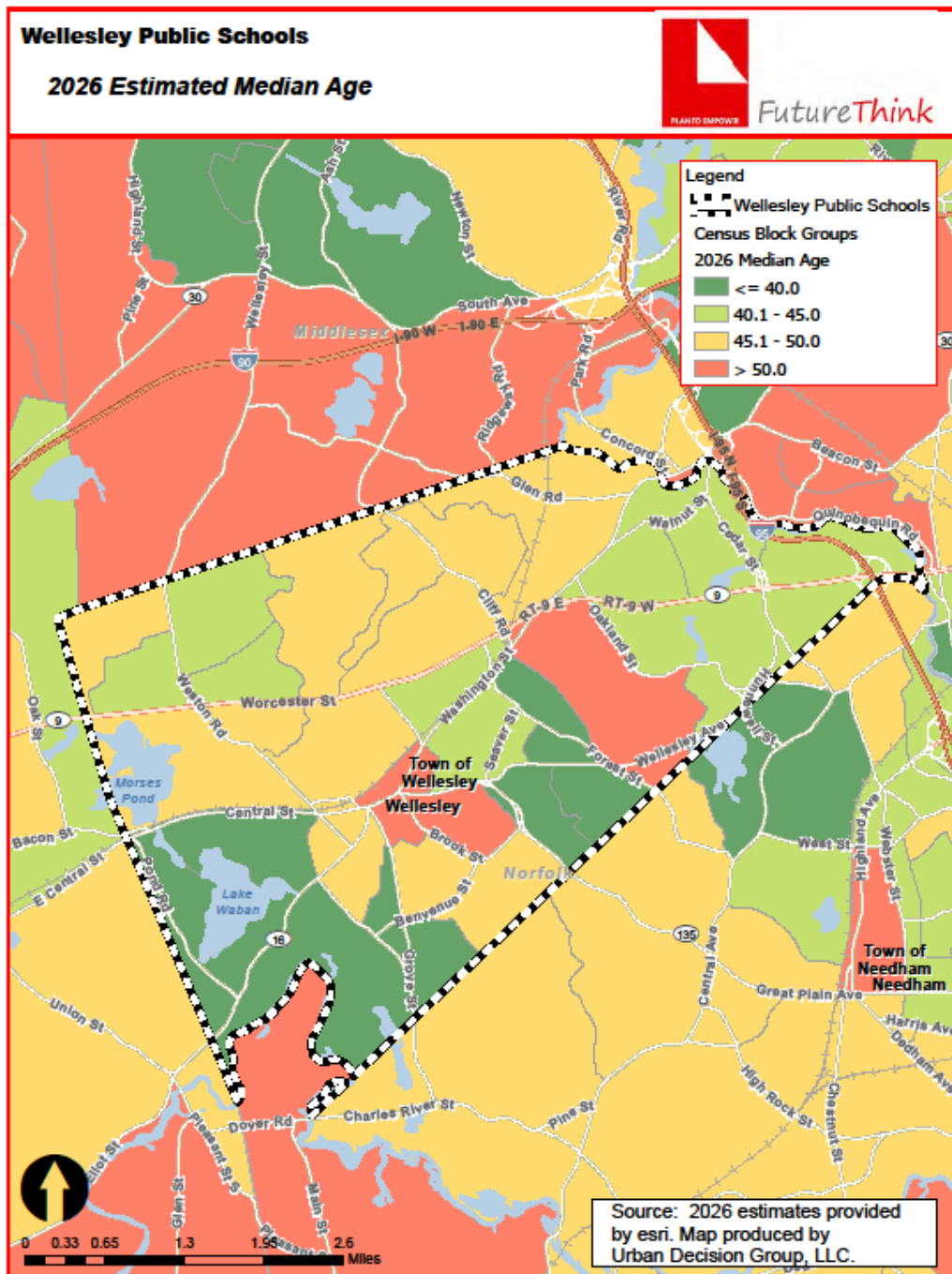
The third and fourth maps (on pages 17 and 18) illustrate the median age. In 2021, the median age is predominantly under 50. The low median age is due to the college. In 2026, there is little change although a portion of the eastern edge of the District moves from under 40 to between 40 and 45.

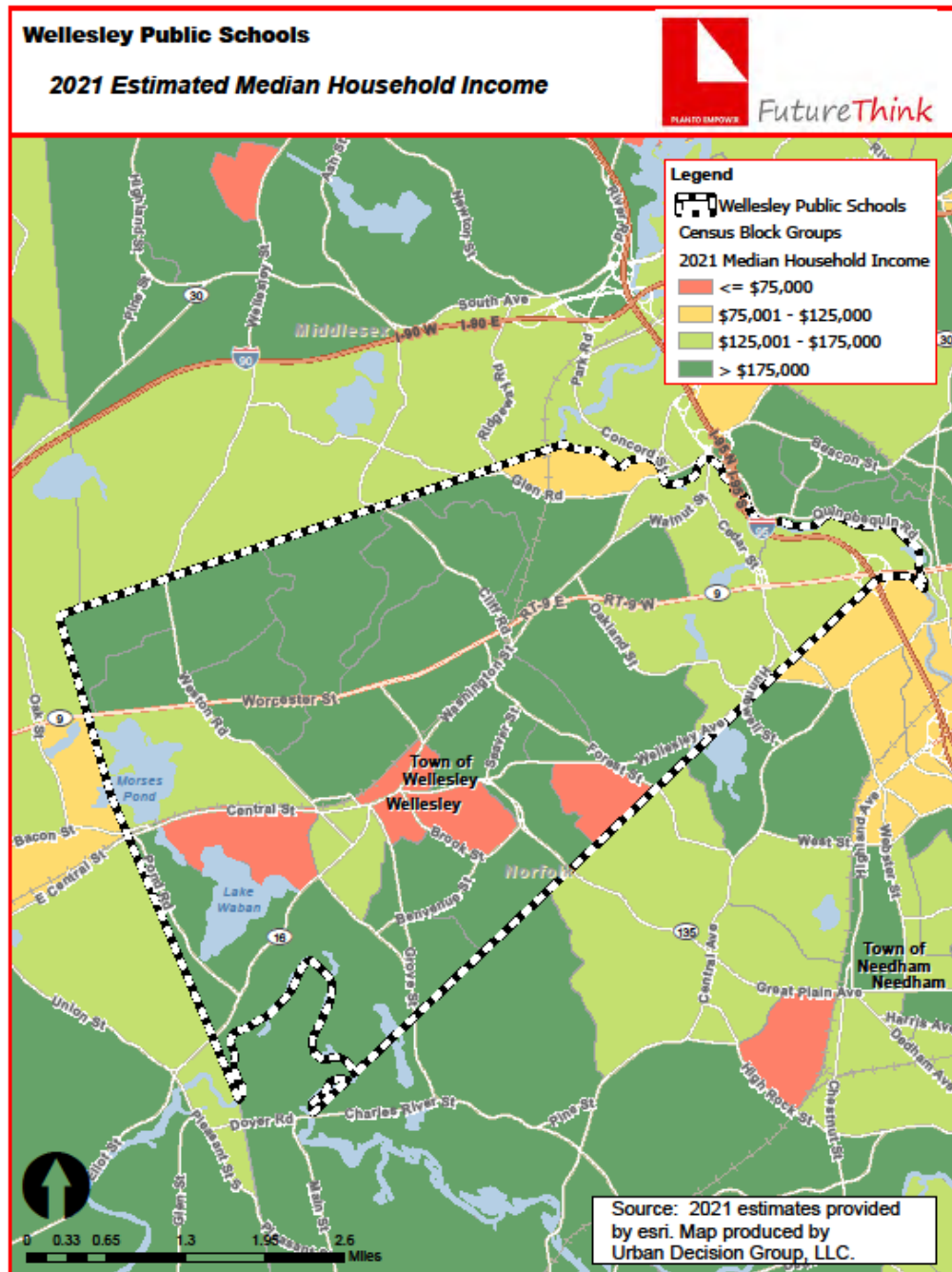
The fifth and sixth maps (on pages 19 and 20) illustrate median household income. In 2021, there are a few small pockets roughly in the center of the District with a median household income under \$75,000. There is one area in the northern portion of the District with income between \$75,000 and \$125,000, and a few areas with income between \$125,000 and \$175,000. The vast majority of the District has income over \$175,000. In 2026, even more of District has a median household income over \$175,000.

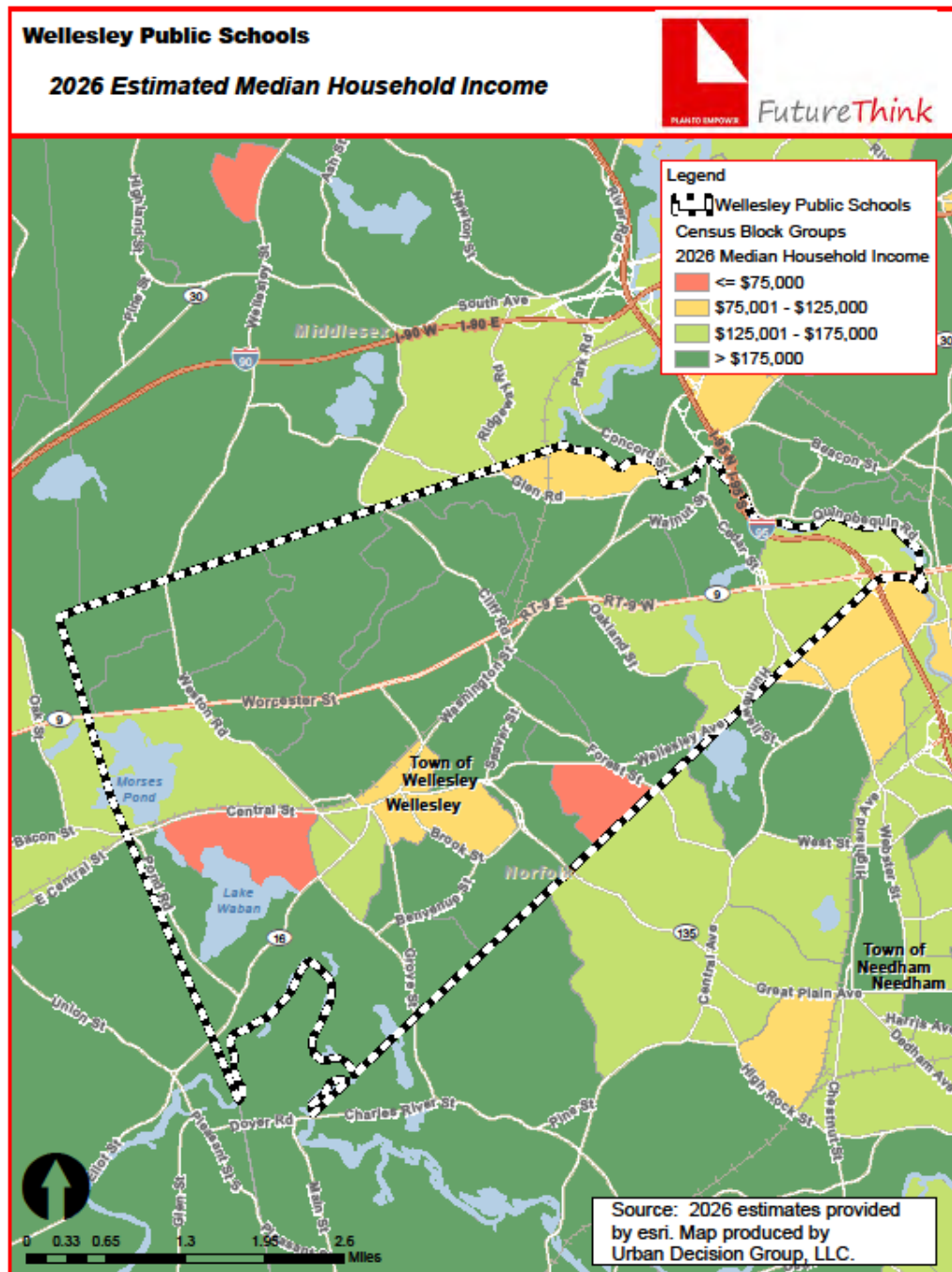












COMPARABLE DISTRICTS

In order to gain perspective on the impact of COVID-19, as well as the aging population of Massachusetts, a review of other school districts in the area was conducted. The other districts included:

- Brookline
- Lexington
- Natick
- Needham
- Wayland
- Weston.

Data was also collected for the State of Massachusetts.

The following data points were considered: total population, population ages 0-18, average family size, and total family households for years 2016, 2021, and 2026.

The total population has risen in Massachusetts and Wellesley, Brookline, Natick, Needham, and Wayland from 2016 to 2021. Lexington, Newton, and Weston experienced losses ranging from approximately 1-3 percent. All areas are projected to increase from 2021 to 2026.

However, the age 0-18 population has declined in all areas except Needham from 2016 to 2021 and is projected to decline in all areas from 2021 to 2026.

Wellesley, Lexington, Newton, and Weston all experienced decline of approximately 14% or more from 2016 to 2021. The projected decline of this population from 2021 to 2026 ranges from approximately 1% to 7 percent.

Population	Massachusetts	Wellesley	Brookline	Lexington	Natick	Needham	Newton	Wayland	Weston
2016 Estimates									
Total Population	6,811,779	28,909	59,180	32,936	35,385	30,167	88,317	13,544	11,946
Total Age 0-18	1,494,504	9,384	11,374	8,919	8,712	8,447	22,980	3,641	3,801
2021 Estimates									
Total Population	6,957,142	28,927	60,905	32,600	36,175	31,964	87,559	13,847	11,621
Total Age 0-18	1,451,491	8,038	11,076	7,682	8,671	8,587	19,556	3,367	2,929
2026 Estimates									
Total Population	7,130,208	29,302	61,638	33,139	37,408	32,880	90,403	14,194	11,788
Total Age 0-18	1,430,009	7,795	10,420	7,390	8,531	8,325	19,380	3,286	2,731
% Change from 2016-21									
Total Population	2.1%	0.1%	2.9%	-1.0%	2.2%	6.0%	-0.9%	2.2%	-2.7%
Total Age 0-18	-2.9%	-14.3%	-2.6%	-13.9%	-0.5%	1.7%	-14.9%	-7.5%	-22.9%
% Change from 2021-26									
Total Population	2.5%	1.3%	1.2%	1.7%	3.4%	2.9%	3.2%	2.5%	1.4%
Total Age 0-18	-1.5%	-3.0%	-5.9%	-3.8%	-1.6%	-3.1%	-0.9%	-2.4%	-6.8%

Source: ESRI, American Community Survey

Regarding family size, all areas experienced decline or no change from 2016 to 2021. Average family size for all areas is projected to stay the same or increase by less than 1% from 2021 to 2026.

Total family households increased from 2016 to 2021 in all areas except Lexington, Newton, and Weston, and Brookline remained the same. All are projected to increase by approximately 3% or less from 2021 to 2026.

Family Size, Households	Massachusetts	Wellesley	Brookline	Lexington	Natick	Needham	Newton	Wayland	Weston
2016 Estimates									
Average Family Size	3.16	3.32	2.94	3.22	3.14	3.28	3.10	3.17	3.29
Total Family Households	1,633,661	6,643	12,746	9,055	9,229	8,061	21,972	3,763	3,107
2021 Estimates									
Average Family Size	3.10	3.29	2.94	3.16	3.08	3.24	3.06	3.15	3.29
Total Family Households	1,682,492	6,864	12,745	9,010	9,388	8,503	21,241	3,878	3,010
2026 Estimates									
Average Family Size	3.10	3.31	2.95	3.17	3.09	3.25	3.07	3.15	3.30
Total Family Households	1,719,976	6,932	12,827	9,134	9,680	8,715	21,934	3,974	3,051
% Change from 2016-21									
Average Family Size	-1.9%	-0.9%	0.0%	-1.9%	-1.9%	-1.2%	-1.3%	-0.6%	0.0%
Total Family Households	3.0%	3.3%	0.0%	-0.5%	1.7%	5.5%	-3.3%	3.1%	-3.1%
% Change from 2021-26									
Average Family Size	0.0%	0.6%	0.3%	0.3%	0.3%	0.3%	0.3%	0.0%	0.3%
Total Family Households	2.2%	1.0%	0.6%	1.4%	3.1%	2.5%	3.3%	2.5%	1.4%

Source: ESRI, American Community Survey

All of these data points play a role in the decrease of public school enrollment. Less children living in the District, aging population, stagnant/decline in family size, and low growth in total family households point to lower student enrollment.

The following table illustrates the change in public school enrollment from 2016 to 2021. During this time, Lexington and Wayland Public Schools experienced a slight increase in enrollment, while the rest of the Districts decreased in enrollment.

Public School Enrollment	Wellesley	Brookline	Lexington	Natick	Needham	Newton	Wayland	Weston
2016 Enrollment	4,968	7,398	6,849	5,323	5,495	12,450	2,657	2,138
2021 Enrollment	4,362	6,720	6,864	5,175	5,432	11,870	2,700	1,879
% Change from 2016 to 2021	-12.20%	-9.16%	0.22%	-2.78%	-1.15%	-4.66%	1.62%	-12.11%

Source: DART DESE School Profiles

HOUSING INFORMATION

The table below illustrates the number of demolitions, single-family, two-family, and multi-family building permits issued each year in Wellesley. The net gain between demolitions and new single family homes is 11 (679 demolitions and 690 single-family permits). As such, it doesn't have a significant impact on student enrollment.

Town of Wellesley Housing Development

Year	Demolitions	Single Family Permits	Two Family Permits	Multi Family Units
2011	47	45	0	0
2012	71	71	0	0
2013	70	70	0	0
2014	58	64	0	25
2015	95	93	3	3
2016	85	84	4	0
2017	57	54	2	0
2018	42	44	1	0
2019	55	42	2	0
2020	28	37	7	350
2021	71	57	10	35
2022*	0	29	0	40
Total	679	690	29	453

Source: Town of Wellesley Planning Department, SOCDs Building Permit Database
preliminary through June 2022

According to the Town of Wellesley Planning Department, there are four non-40B projects either underway or in the pipeline with 505 potential units. They include:

- 40R Wellesley Park –350 units on 26 acres (88 affordable); 35 studio, 175 1-bedroom, 105 2-bedroom, and 35 3-bedroom; total occupancy expected by December 2022.
- Barton Road – redevelopment of 15 acres; currently has 88 low income units; still at the study level.
- Terrazza on Linden Street (formerly Delanson Circle) – 35 market units (mix of 1, 2, and 3-bedroom units); maximum of 75 bedrooms + 4 affordable 2-bedroom units; occupancy expected in Fall 2023.
- Bristol - 148 Weston Road – 26 market units (mix of 1, 2, and 3-bedroom units); maximum of 58 bedrooms + 2 affordable 2-bedroom units; application to be filed January 2020; occupancy expected in Fall 2022-Spring 2023.

Tailby Lot, a redevelopment of 2 Town parking lots on 2.7 acres with 90 units proposed, is currently off the table.

Additionally, there are four 40B projects with 104 potential units (two projects are currently in litigation). The 40B projects include:

40B Projects	Project Description	PEL Granted/Denied	Comp. Permit Applied	Comp. Permit Decision	1 Bedroom	2 Bedroom	3 Bedroom
680 Worcester Street*	20 Units on .5 Acres	5/23/2018	8/7/2018	7/17/2019	2	15	3
16 Stearns Road*	24 Units on 1.02 acres	5/22/2018	8/7/2018	6/20/2019	0	21	3
Fieldstone Way (135 Great Plain)	44 Units on 12 Acres	2/7/2018	3/12/2018	11/2/2018	2	8	34
3 Burke Lane	16 Units on .92 acres	3/27/2019	4/18/2019		2	12	2
Total Potential 40B Units	104				6	56	42

Source: Town of Wellesley Planning Department

* In Litigation

Fieldstone Way (135 Great Plain) is wrapping up its final phase of construction. Construction just began on 3 Burke Lane and is likely 18 months out from completion.

New multi-family housing can impact student enrollment. Based on national averages, 100 multi-family units typically yield 21 school-age children in grades K-12. The above potential of multi-family units for both non-40B and 40B projects is 609 units. As part of the January 2020 enrollment study, the average yield factor for Wellesley was determined to be .22. Using this yield factor, the resulting number would be 134 K-12 students.

It is important to note that development will not all occur at once.

SURVIVAL RATIOS

The chart below demonstrates the changes in enrollment as students move through the system. Percentages greater than 100 indicate that there are more students than there were in the previous grade the previous year. In other words, there was growth and new students entered the system. Percentages less than 100 indicate that there was decline with students leaving the system.

- **Birth to Kindergarten:** This ratio indicates the number of children born in the area who attend kindergarten in the District 5 years later. Percentages less than 100% result from movement out of the District, attendance at a non-public or charter school, or residence in another district within the same area. Percentages greater than 100% result from movement into the District after birth.

The following table illustrates the survival ratios for the Wellesley Public Schools. On average, the survival ratios for grades K-2 and 12 exceed 100 percent. For grades 3-11, the average is between approximately 97 and 100 percent.

With the exception of birth to K and K to 1, the survival ratios are extremely stable with a deviation of less than approximately 3.4 percent. The birth to K ratio has had the most volatility over the past 10 years, but has averaged approximately 151.4% over the last 10 years, excluding the 2020-21 school year.

The K to 1 ratio has declined from 109.3% from 2014-15 to the 2015-16 school year to a low of 85.9% from the 2019-20 to the 2020-21 school year. There was a significant increase from the 2020-21 to 2021-22 school year.

from	to	birth -> K	K->1	1->2	2->3	3->4	4->5	5->6	6->7	7->8	8->9	9->10	10->11	11->12
2013	2014	155.3%	108.8%	103.1%	102.3%	102.5%	99.5%	97.7%	98.2%	100.3%	101.5%	99.2%	100.0%	98.2%
2014	2015	134.4%	109.3%	103.8%	102.0%	100.3%	99.8%	97.1%	98.3%	97.7%	103.2%	97.3%	99.2%	99.5%
2015	2016	169.1%	105.9%	102.7%	101.0%	96.8%	98.0%	96.3%	96.7%	96.9%	100.3%	100.0%	100.5%	100.3%
2016	2017	153.6%	102.3%	102.9%	99.7%	98.8%	97.2%	98.2%	100.5%	101.4%	98.5%	102.7%	100.3%	100.5%
2017	2018	155.0%	105.9%	101.4%	100.0%	99.7%	100.0%	103.1%	100.0%	97.7%	99.7%	102.0%	98.4%	101.3%
2018	2019	148.6%	102.2%	102.2%	100.3%	97.7%	98.1%	99.8%	97.0%	98.9%	97.4%	98.6%	97.0%	100.3%
2019	2020	105.3%	85.9%	95.2%	92.9%	92.5%	93.6%	91.3%	93.6%	97.6%	96.8%	97.6%	97.1%	100.0%
2020	2021	144.9%	117.4%	102.5%	97.8%	94.1%	97.0%	97.5%	96.7%	96.9%	91.7%	98.3%	98.4%	98.8%
2021	2022	149.7%	104.9%	104.7%	103.8%	100.3%	100.9%	92.2%	97.8%	100.0%	101.1%	102.6%	102.5%	102.2%
	average	146.24%	104.724%	102.06%	100.0%	98.08%	98.2%	97.0%	97.6%	98.6%	98.910%	99.815%	99.270%	100.119%
	standard deviation	16.911%	7.925%	2.588%	2.993%	3.008%	2.061%	3.393%	1.914%	1.543%	3.188%	2.004%	1.654%	1.141%

ENROLLMENT PROJECTION

Three sets of enrollment projections (moderate/most likely, low, and high) have been developed after analyzing the data collected in this report.

The moderate/most likely projections indicate a decrease of 279 students (or approximately 7%) from the 2022-23 to the 2032-33 school year. The following tables illustrate projected enrollments by grade and by grade group through the 2032-33 school year.

Wellesley Public Schools
Projected Enrollment - Moderate/Most Likely

Grade	2022-23 Actual	2023-24	2024-25	2025-26	2026-27	2027-28	2028-29	2029-30	2030-31	2031-32	2032-33
K	247	310	258	307	313	296	296	296	296	296	296
1	301	257	323	269	319	326	308	308	308	308	308
2	269	309	264	331	276	328	335	317	317	317	317
3	299	270	310	265	333	277	329	336	318	318	318
4	309	296	267	307	262	329	274	326	332	315	315
5	323	304	291	263	303	258	324	270	321	327	310
6	297	321	303	290	262	301	257	322	269	319	326
7	308	293	316	298	285	258	296	253	317	265	314
8	323	304	289	312	294	282	254	292	250	313	261
9	374	320	301	286	309	291	279	252	289	247	310
10	351	372	318	300	285	308	290	278	251	288	246
11	366	348	369	315	297	282	305	287	275	249	286
12	369	368	350	371	317	298	283	306	289	276	250
K - 12 Total	4,136	4,072	3,959	3,914	3,855	3,834	3,830	3,843	3,832	3,838	3,857

Source: FutureThink

Wellesley Public Schools
Projected Enrollment by Grade Group - Moderate/Most Likely

Grade	2022-23 Actual	2023-24	2024-25	2025-26	2026-27	2027-28	2028-29	2029-30	2030-31	2031-32	2032-33
K - 5	1,748	1,746	1,713	1,742	1,806	1,814	1,866	1,853	1,892	1,881	1,864
6 - 8	928	918	908	900	841	841	807	867	836	897	901
9 - 12	1,460	1,408	1,338	1,272	1,208	1,179	1,157	1,123	1,104	1,060	1,092
K - 12 Total	4,136	4,072	3,959	3,914	3,855	3,834	3,830	3,843	3,832	3,838	3,857

Source: FutureThink

In addition to the moderate/most likely enrollment projection, following are low and high enrollment projections. The following defines in terms of economy and housing, the differences between the projections.

Low Projection

- Higher inflation/interest rates than current market
- Approximately 40-50 demolition and new single-family permits per year
- Less than 50 new multi-family units per year

Moderate/Most Likely Projection

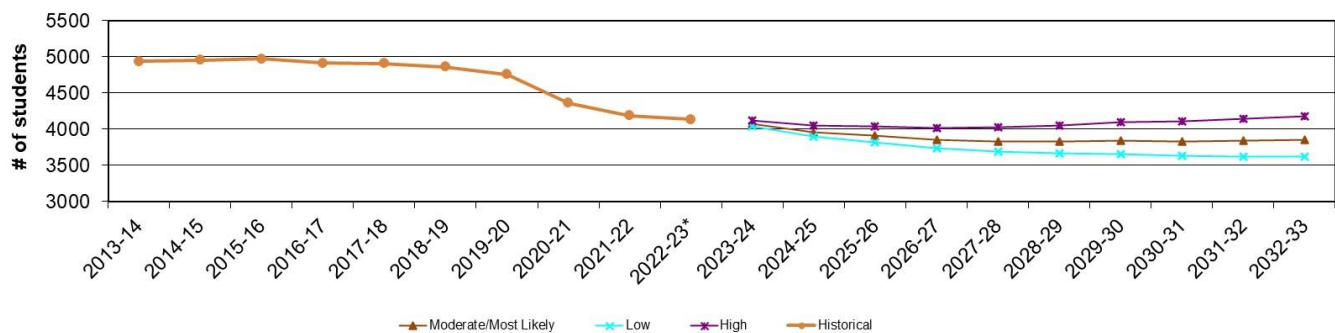
- Steady inflation/interest rates (similar to current market conditions)
- Approximately 60-70 demolition and new single-family permits per year
- Approximately 50-100 new multi-family units per year

High Projection

- Lower inflation/interest rates than current market
- Approximately 80-90 demolition and new single-family permits per year
- More than 100 new multi-family units per year

The projections range from a low of 3,626 students to a high of 4,174 students in the 2032-33 school year.

Wellesley Public Schools Historical/Projected Enrollment Comparison



Low Projection

The low projection indicates a decrease of 510 students, or approximately 12%, over the next ten years.

**Wellesley Public Schools
Projected Enrollment - Low**

Grade	2022-23 Actual	2023-24	2024-25	2025-26	2026-27	2027-28	2028-29	2029-30	2030-31	2031-32	2032-33
K	247	303	253	300	306	290	290	290	290	290	290
1	301	256	314	262	311	317	300	300	300	300	300
2	269	307	261	320	267	317	324	306	306	306	306
3	299	268	305	259	319	265	315	322	305	305	305
4	309	292	262	299	254	311	260	308	315	298	298
5	323	301	285	255	291	248	304	253	301	307	291
6	297	318	297	281	251	287	244	299	250	296	302
7	308	289	310	289	274	245	280	237	292	243	289
8	323	302	283	304	284	268	240	274	233	286	238
9	374	319	298	280	300	280	265	237	270	230	282
10	351	371	316	295	277	297	277	262	235	268	228
11	366	347	366	312	292	274	294	274	259	232	265
12	369	366	347	366	312	292	274	294	274	259	232
K - 12 Total	4,136	4,039	3,897	3,822	3,738	3,691	3,667	3,656	3,630	3,620	3,626

Source: FutureThink

**Wellesley Public Schools
Projected Enrollment by Grade Group - Low**

Grade	2022-23 Actual	2023-24	2024-25	2025-26	2026-27	2027-28	2028-29	2029-30	2030-31	2031-32	2032-33
K - 5	1,748	1,727	1,680	1,695	1,748	1,748	1,793	1,779	1,817	1,806	1,790
6 - 8	928	909	890	874	809	800	764	810	775	825	829
9 - 12	1,460	1,403	1,327	1,253	1,181	1,143	1,110	1,067	1,038	989	1,007
K - 12 Total	4,136	4,039	3,897	3,822	3,738	3,691	3,667	3,656	3,630	3,620	3,626

Source: FutureThink

High Projection

The high projection indicates an increase of 38 students, or approximately 1%, over the next ten years.

**Wellesley Public Schools
Projected Enrollment - High**

Grade	2022-23 Actual	2023-24	2024-25	2025-26	2026-27	2027-28	2028-29	2029-30	2030-31	2031-32	2032-33
K	247	315	263	312	319	302	302	302	302	302	302
1	301	263	335	279	332	339	321	321	321	321	321
2	269	310	271	346	288	342	349	331	331	331	331
3	299	274	316	276	352	293	348	355	337	337	337
4	309	299	274	316	276	352	294	349	356	337	337
5	323	308	299	273	315	275	351	293	348	355	336
6	297	324	309	300	274	317	276	353	294	349	356
7	308	295	322	307	297	272	314	274	350	292	346
8	323	306	293	320	305	296	271	312	272	348	290
9	374	322	306	292	319	305	295	270	312	272	347
10	351	377	325	308	295	322	307	297	272	314	274
11	366	357	383	330	313	299	327	312	302	277	319
12	369	368	359	385	332	315	301	329	314	304	278
K - 12 Total	4,136	4,118	4,055	4,044	4,017	4,029	4,056	4,098	4,111	4,139	4,174

Source: FutureThink

**Wellesley Public Schools
Projected Enrollment by Grade Group - High**

Grade	2022-23 Actual	2023-24	2024-25	2025-26	2026-27	2027-28	2028-29	2029-30	2030-31	2031-32	2032-33
K - 5	1,748	1,769	1,758	1,802	1,882	1,903	1,965	1,951	1,995	1,983	1,964
6 - 8	928	925	924	927	876	885	861	939	916	989	992
9 - 12	1,460	1,424	1,373	1,315	1,259	1,241	1,230	1,208	1,200	1,167	1,218
K - 12 Total	4,136	4,118	4,055	4,044	4,017	4,029	4,056	4,098	4,111	4,139	4,174



CONCLUSION

As with any projection, the District should pay close attention to birth counts, enrollment in elementary schools, non-public school enrollment, and housing growth. Each of these factors will have an impact on future student enrollment to varying degrees.

All data points suggest a decline in District enrollment due to lower birth counts, projected decline in school age population, projected increase in non-school age population, and stable average family size.

- Birth counts continue to be 200 or less. In 2006, births were at 273. Preliminary data for 2020 and 2021 have births at 196 and 200, respectively. Low birth counts will have an impact on future Kindergarten enrollment.
- K-5 enrollment has decreased by approximately 25% over the past 10 years. These smaller class sizes will have an impact on future enrollment as students move through the grades over the next several years.
- Non-public school enrollment has increased from approximately 20% of the total school enrollment residing in the District to 24 percent. As COVID-19 comes under control, it remains to be seen whether students will return to the public school system. This increase, however, does not account for the entire decline of the District's enrollment.
- While overall population is increasing in the Town of Wellesley, the age 0-18 population is decreasing. This is happening across the state and in neighboring school districts. Average family size has declined or stayed the same. Total family households have increased slightly.
- Single family building permits and demolitions have been essentially 1 to 1 over the past several years. New multi-family housing is expected to offset the decline in enrollment somewhat but not result in any increases in overall enrollment over the 10-year period of the moderate/most likely enrollment projections.

FutureThink is pleased to have had the opportunity to provide the District with enrollment projection services. We hope this document will provide the necessary information to make informed decisions about the future of the Wellesley Public Schools.

