

# Town of Medfield Complete Streets Program Concepts



# Complete Streets Definition

## Complete Streets are for Everyone

A Complete Street is one that provides safe and accessible options for all travel modes – walking, biking, transit, and motorized vehicles – for people of all ages and abilities. (MassDOT)

# Complete Streets Program

## **Tier 1 – Complete Streets Training and Policy Development (Completed 3/14/22)**

- Develop comprehensive Complete Streets Policy to guide existing and future development practices
- Facilitate better pedestrian, bicycle, and transit travel for users of all ages and abilities
- Rolling submittal

## **Tier 2 – Complete Streets Prioritization Plan (Completed 7/12/23)**

- Determine Complete Streets needs and prioritize projects
- Must include at least 15 projects
- Preliminary cost estimates
- Round 1 April 1, 2024
- Round 2 September 1, 2024

## **Tier 3 – Project Construction Funding**

- Funding for Complete Streets infrastructure
- Enter Tier 3 after successful completion of Tier 1 and 2
- Up to **\$500,000** reimbursement for construction
- Round 1 May 1, 2024
- Round 2 October 1, 2024

# Tier 2 Prioritization Plan

## A Collaborative Effort

- Kickoff Meeting – Working Group
- Identify Town priorities, preferences & key focus areas
- Incorporate input from residents & stakeholders on known problem areas/issues
- Identify 15 projects or more

## Key Generators of Ped/Bicycle Traffic

- Schools
- Library
- Recreation areas/Parks/Preserves
- Shopping
- Bus Routes
- Senior Centers

## Evaluate Projects

- Site visits
- Geometrics
- Traffic, pedestrian, bicycle volumes
- Crash evaluation
- Gap, connectivity analysis
- Safety issues
- ADA compliance
- MassDOT/MAPC data
- GIS mapping
- Concept sketches
- Preliminary cost estimates
- **Non-State roadways**

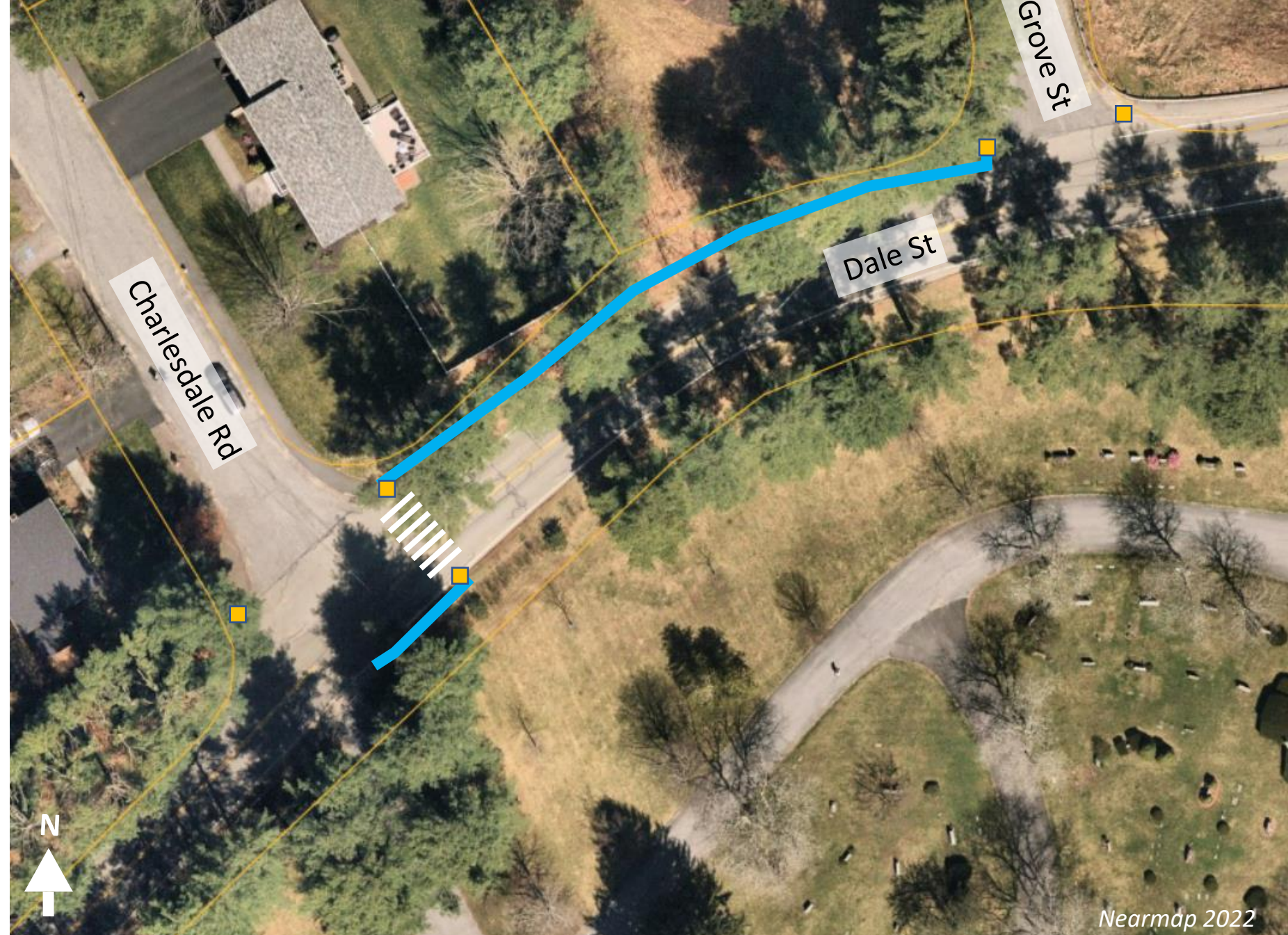
## Prioritization Plan

- Rank and Prioritize projects
- Project and Public Meetings



# Dale Street Sidewalk Grove to Charlesdale

- Connect neighborhood to existing sidewalk
- Improve accessibility for people with disabilities
- Improve visibility to cemetery
- Approximately 250 LF of 5-foot-wide asphalt sidewalk with asphalt berm.
- Cost estimate:  
**\$104,500**

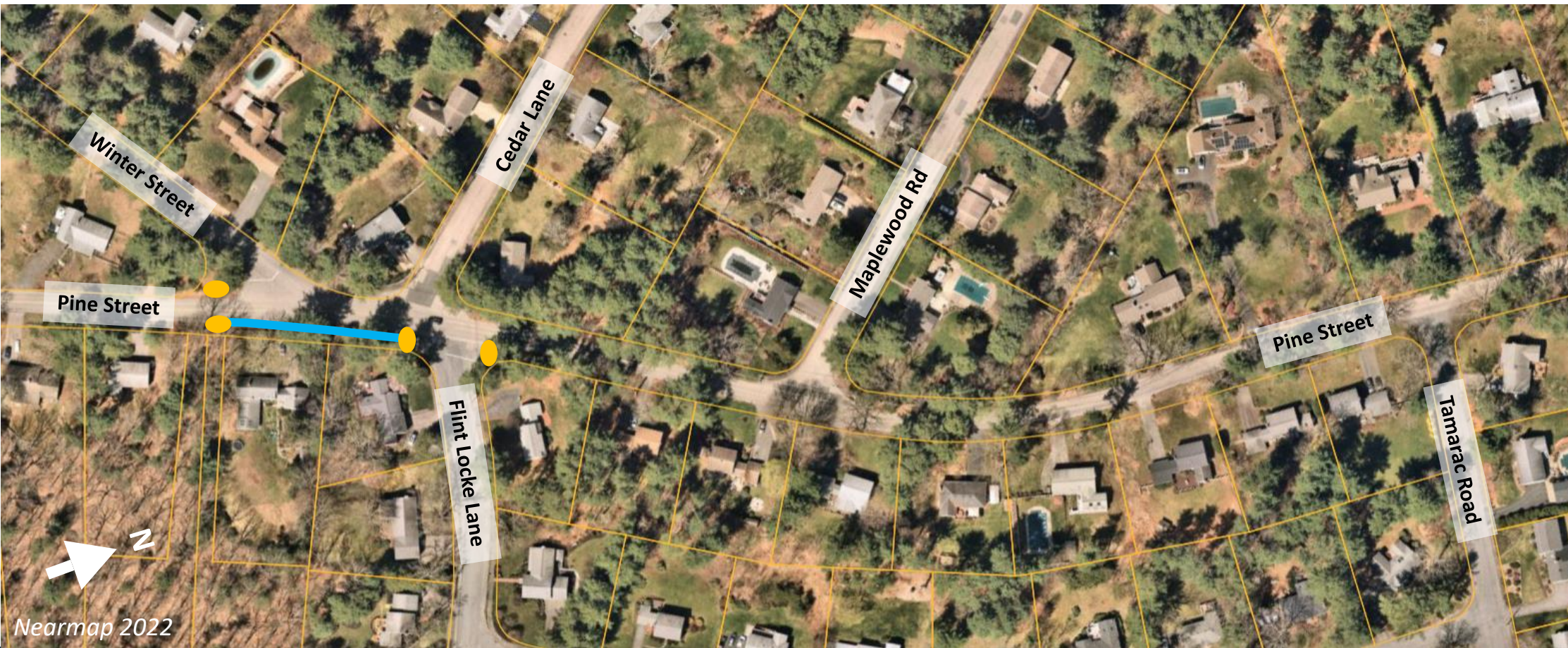


Nearmap 2022



# Pine Street Sidewalk (North)

- 5-foot sidewalk and ramps
- Connecting neighborhoods to North Street
- 5-foot-wide asphalt sidewalk with asphalt berm.
- Need to think about drainage





# Winter Street sidewalk

- Ramps and crosswalk improvement
- Connecting neighborhoods to North Street sidewalk
- Approximately 1,400 LF of 5-foot-wide asphalt sidewalk with asphalt berm.
- Cost estimate: **\$248,000**





# Adams Street Sidewalk (West)

- Provides access to schools
- Approximately 1,500 LF of 5-foot-wide asphalt sidewalk with asphalt berm.
- Cost estimate: **\$190,000**

**\* TOTAL COST ESTIMATE FOR ALL 3  
PROPOSED PROJECTS: \$542,500**

